

Anti-RHOA antibody (1-193) (STJ118088)

GENERAL INFORMATION

Product Type	Primary antibodies
Applications	WB/IHC-P/IF/ICC/ELISA
Host / Source	Rabbit
Reactivity	Human

PRODUCT PROPERTIES

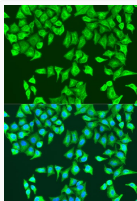
Clonality	Polyclonal
Concentration	Lot specific
Conjugation	Unconjugated
Purification	Affinity purification
Dilution Range	WB:1:500-1:2000 IHC-P:1:100-1:500 IF/ICC:1:50-1:200 ELISA:Recommended starting concentration is 1 µg/mL. Please optimize the concentration based on your specific assay requirements.
Formulation	PBS with 0.02% Sodium Azide, 50% Glycerol, pH 7.3.
Isotype	IgG
Molecular Weight	Protein Mw: 22kDa Observed Mw: 21kDa
Storage Instruction	Store at -20°C for up to 1 year from the date of receipt, and avoid repeat freeze-thaw cycles.

TARGET INFORMATION

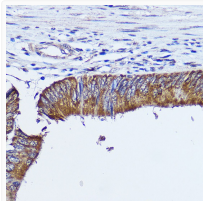
Gene ID	387
Gene Symbol	RHOA
UniProt ID	RHOA_HUMAN
Immunogen Region	1-193
Immunogen Sequence	MAAIRKKLVIVGDGACGKTC LLIVFSKDQFPEVYVPTVFE NYVADIEVDGKQVELALWDT AGQEDYDRLRPLSYPTDVI LMCFSIDSPDSLENIPEKWT PEVKHFCPNVPIILVGNKKD LRNDEHTRRELAKMKQEPVK PEEGRDMANRIGAFGYMECS AKTKDGVREVFEMATRAALQ ARRGKKKSGCLVL
Specificity	Recombinant fusion protein containing a sequence corresponding to amino acids 1-193 of human RhoA (NP_001655.1).

ADDITIONAL INFORMATION

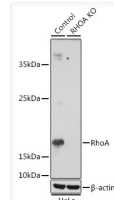
Note	STRICTLY FOR FURTHER SCIENTIFIC RESEARCH USE ONLY (RUO). MUST NOT TO BE USED IN DIAGNOSTIC OR THERAPEUTIC APPLICATIONS.
------	---



Immunofluorescence analysis of U2OS cells using RhoA antibody (STJ118088) at dilution of 1:100. Blue: DAPI for nuclear staining.



Immunohistochemistry analysis of paraffin-embedded human colon carcinoma using [KO Validated] RhoA Rabbit polyclonal antibody (STJ118088) at dilution of 1:300 (40x lens). Perform microwave antigen retrieval with 10 mM PBS buffer pH 7.2 before commencing with immunohistochemistry staining protocol.



Western blot analysis of extracts from normal (control) and RhoA knockout (KO) HeLa cells, using RhoA antibody (STJ118088) at 1:1000 dilution. Secondary antibody: HRP Goat Anti-Rabbit IgG (H+L) (STJS000856) at 1:10000 dilution. Lysates/proteins: 25 µg per lane. Blocking buffer: 3% nonfat dry milk in TBST. Detection: ECL Basic Kit. Exposure time: 3min.