

Anti-ODF2 antibody (630-829) (STJ118078)

GENERAL INFORMATION

Product Type	Primary antibodies
Applications	WB/IF/ICC/ELISA
Host / Source	Rabbit
Reactivity	Human/Mouse/Rat

PRODUCT PROPERTIES

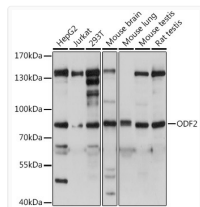
Clonality	Polyclonal
Concentration	Lot specific
Conjugation	Unconjugated
Purification	Affinity purification
Dilution Range	WB:1:500-1:2000 IF/CC:1:50-1:200 ELISA:Recommended starting concentration is 1 Mu g/mL. Please optimize the concentration based on your specific assay requirements.
Formulation	PBS with 0.01% Thimerosal, 50% Glycerol, pH 7.3.
Isotype	IgG
Molecular Weight	Protein Mw: 95kDa Observed Mw: 80kDa
Storage Instruction	Store at -20°C for up to 1 year from the date of receipt, and avoid repeat freeze-thaw cycles.

TARGET INFORMATION

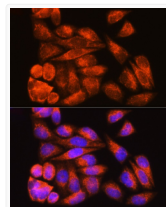
Gene ID	4957
Gene Symbol	ODF2
UniProt ID	ODFP2_HUMAN
Immunogen Region	630-829
Immunogen Sequence	IISDLRSRIEHQGDKLEMAR EKHQASQKENKQLSLKVDEL ERKLEATSAQNIEFLQVIK REEAIHQSQLRLEEKTRCG TLRQLESIAIEDARRQVEQT KEHALSKERAAQNKILDLET QLSRTKTELSQLRRSRDDAD RRYQSRLQDLKDRLEQSEST NRSMQNYVQFLKSSYANVFG DGPYSTFLTSSPIRSRPPA
Specificity	Recombinant fusion protein containing a sequence corresponding to amino acids 630-829 of human ODF2 (NP_702911.1).

ADDITIONAL INFORMATION

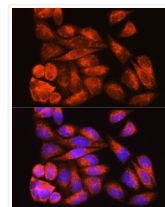
Note STRICTLY FOR FURTHER SCIENTIFIC RESEARCH USE ONLY (RUO). MUST NOT TO BE USED IN DIAGNOSTIC OR THERAPEUTIC APPLICATIONS.



Western blot analysis of extracts of various cell lines, using ODF2 antibody (STJ118078) at dilution. Secondary antibody: HRP Goat Anti-rabbit IgG (H+L) (STJS000856) at 1:10000 dilution. Lysates/proteins: 25 Mu g per lane. Blocking buffer: 3% non-fat dry milk in TBST. Detection: ECL Basic Kit. Exposure time: 3s.



Immunofluorescence analysis of HeLa cells using ODF2 rabbit polyclonal antibody (STJ118078) at dilution of 1:100. Blue: DAPI for nuclear staining.



Immunofluorescence analysis of HeLa cells using ODF2 rabbit polyclonal antibody (STJ118078) at dilution of 1:100 (40x lens). Blue: DAPI for nuclear staining.