

Anti-RNF149 antibody (221-400) (STJ118075)

GENERAL INFORMATION

Product Type	Primary antibodies
Applications	WB/IHC-P/IF/ICC/ELISA
Host / Source	Rabbit
Reactivity	Human/Mouse/Rat

PRODUCT PROPERTIES

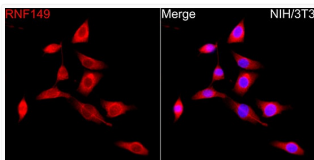
Clonality	Polyclonal
Concentration	Lot specific
Conjugation	Unconjugated
Purification	Affinity purification
Dilution Range	WB:1:500-1:2000 IHC-P:1:50-1:200 IF/ICC:1:50-1:200 ELISA:Recommended starting concentration is 1 Mu g/mL. Please optimize the concentration based on your specific assay requirements.
Formulation	PBS with 0.09% Sodium Azide, 50% Glycerol, pH7.3.
Isotype	IgG
Molecular Weight	Protein Mw: 43kDa Observed Mw: 43kDa/
Storage Instruction	Store at -20°C for up to 1 year from the date of receipt, and avoid repeat freeze-thaw cycles.

TARGET INFORMATION

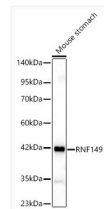
Gene ID	284996
Gene Symbol	RNF149
UniProt ID	RN149_HUMAN
Immunogen Region	221-400
Immunogen Sequence	FYYIQRFLYTGSIQGSQSHR KETKKVIGQLLLHTVKHGEK GIDVDAENCAVCIENFKVKD IIRILPCKHIFHRICIDPWL LDHRTCPMKCLDVIKALGYW GEPGDVQEMPAPESPGRDP AANLSLALPDDDDGSDSSPP SASPAESEPCQCDPSFKGDAG ENTALLEAGRSDSRHHGGPIS
Specificity	Recombinant fusion protein containing a sequence corresponding to amino acids 221-400 of human RNF149 (NP_775918.2).

ADDITIONAL INFORMATION

Note **STRICTLY FOR FURTHER SCIENTIFIC RESEARCH USE ONLY (RUO). MUST NOT TO BE USED IN DIAGNOSTIC OR THERAPEUTIC APPLICATIONS.**



Immunofluorescence analysis of NIH/3T3 cells using RNF149 Rabbit polyclonal antibody (STJ118075) at dilution of 1:50 (40x lens). Secondary antibody: Cy3 Goat Anti-Rabbit IgG (H+L) at 1:500 dilution. Blue: DAPI for nuclear staining.



Western blot analysis of lysates from Mouse stomach using RNF149 Rabbit polyclonal antibody (STJ118075) at 1:600 dilution. Secondary antibody:HRP Goat Anti-Rabbit IgG (H+L) (STJS000856) at 1:10000 dilution. Lysates/proteins: 25 Mu g per lane. Blocking buffer: 3% nonfat dry milk in TBST. Detection:ECL Basic Kit. Exposure time:30s.