

Anti-Acetyl-Histone H2A-K5 antibody (STJ118068)

GENERAL INFORMATION

Product Type	Primary antibodies
Applications	WB/IF/ICC/ELISA
Host / Source	Rabbit
Reactivity	Human/Mouse/Rat/Other

PRODUCT PROPERTIES

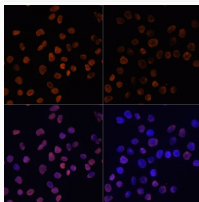
Clonality	Polyclonal
Concentration	Lot specific
Conjugation	Unconjugated
Purification	Affinity purification
Dilution Range	WB:1:500-1:1000 IF/CC:1:50-1:100 ELISA:Recommended starting concentration is 1 Mu g/mL. Please optimize the concentration based on your specific assay requirements.
Formulation	PBS with 0.01% Thimerosal, 50% Glycerol, pH 7.3.
Isotype	IgG
Molecular Weight	Protein Mw: 14kDa Observed Mw: 14kDa
Storage Instruction	Store at -20°C for up to 1 year from the date of receipt, and avoid repeat freeze-thaw cycles.

TARGET INFORMATION

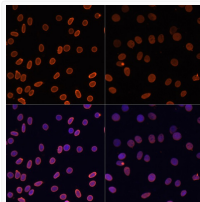
Gene ID	3012/8335 8329/8330/8332/8336/8969
Gene Symbol	H2AC4.H2AC8 H2AC11.H2AC13.H2AC15.H2AC16.H
UniProt ID	H2A1B_HUMAN H2A1_HUMAN
Immunogen Sequence	GRGKQ
Specificity	A synthetic acetylated peptide around K5 of human Histone H2A (NP_003508.1).

ADDITIONAL INFORMATION

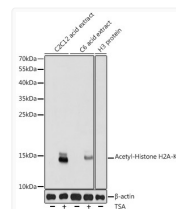
Note **STRICTLY FOR FURTHER SCIENTIFIC RESEARCH USE ONLY (RUO). MUST NOT TO BE USED IN DIAGNOSTIC OR THERAPEUTIC APPLICATIONS.**



Immunofluorescence analysis of HeLa cells using Acetyl-Histone H2A-K5 Rabbit polyclonal antibody (STJ118068) at dilution of 1:100. HeLa cells were treated by TSA (1 uM) at 37 °C for 18 hours. Blue: DAPI for nuclear staining.



Immunofluorescence analysis of C6 cells using Acetyl-Histone H2A-K5 Rabbit polyclonal antibody (STJ118068) at dilution of 1:100. C6 cells were treated by TSA (1 uM) at 37 °C for 18 hours. Blue: DAPI for nuclear staining.



Western blot analysis of various lysates using Acetyl-Histone H2A-K5 Rabbit polyclonal antibody (STJ118068) at 1:1000 dilution. C2C12 cells and C6 cells were treated by TSA (1 uM) at 37 °C for 18 hours. Secondary antibody: HRP Goat Anti-Rabbit IgG (H+L) (STJS000856) at 1:10000 dilution. Lysates/proteins: 25 Mu g per lane. Blocking buffer: 3% nonfat dry milk in TBST. Detection: ECL Basic Kit. Exposure time: 1s.