

## Anti-YTHDF2 antibody (1-200) (STJ118064)

### GENERAL INFORMATION

Product Type	Primary antibodies
Applications	WB/IHC-P/IF/ICC/ELISA
Host / Source	Rabbit
Reactivity	Human/Mouse/Rat

### PRODUCT PROPERTIES

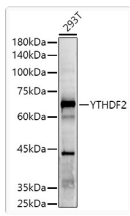
Clonality	Polyclonal
Concentration	Lot specific
Conjugation	Unconjugated
Purification	Affinity purification
Dilution Range	WB:1:500-1:1000 IHC-P:1:50-1:200 IF/CC:1:50-1:200 ELISA:Recommended starting concentration is 1 µg/mL. Please optimize the concentration based on your specific assay requirements.
Formulation	PBS with 0.05% Proclin300, 50% Glycerol, pH 7.3.
Isotype	IgG
Molecular Weight	Protein Mw: 62kDa Observed Mw: 65kDa
Storage Instruction	Store at -20°C for up to 1 year from the date of receipt, and avoid repeat freeze-thaw cycles.

### TARGET INFORMATION

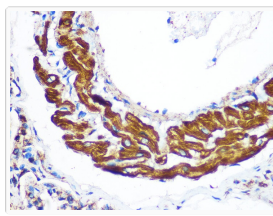
Gene ID	<a href="#">51441</a>
Gene Symbol	<a href="#">YTHDF2</a>
UniProt ID	<a href="#">YTHD2_HUMAN</a>
Immunogen Region	1-200
Immunogen Sequence	MSASSLLEQRPKGQGKVKVN GSVHQKDGLNDDDFEPYLSP QARPNNAYTAMSDSYLPSYY SPSIGFSYSLGEAAWSTGGD TAMPYLTSYGQLSNGEPHFL PDAMFGQPGALGSTPFLGQH GFNFFPSGIDFSAWGNSSQ GQSTQSSGYSSNYAYAPSSL GGAMIDGQSAFANETLNKAP GMNTIDQGMAALKLGSTEVA
Specificity	Recombinant fusion protein containing a sequence corresponding to amino acids 1-200 of human YTHDF2 (NP_057342.2).

### ADDITIONAL INFORMATION

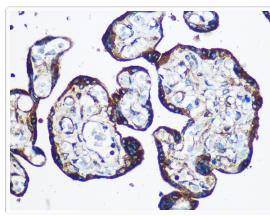
Note	STRICTLY FOR FURTHER SCIENTIFIC RESEARCH USE ONLY (RUO). MUST NOT TO BE USED IN DIAGNOSTIC OR THERAPEUTIC APPLICATIONS.
------	---



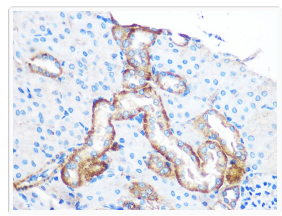
Western blot analysis of lysates from 293T cells, using YTHDF2 Rabbit pAb (STJ118064) at 1:500 dilution.  
 Secondary antibody: HRP-conjugated Goat anti-Rabbit IgG (H+L) (STJS000856) at 1:10000 dilution.  
 Lysates/proteins: 25 Mu g per lane.  
 Blocking buffer: 3% nonfat dry milk in TBST.  
 Detection: ECL Enhanced Kit  
 Exposure time: 90s.



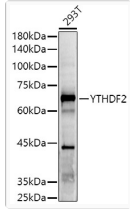
Immunohistochemistry analysis of paraffin-embedded Rat lung using YTHDF2 Rabbit pAb (STJ118064) at dilution of 1:100 (40x lens).  
 Microwave antigen retrieval performed with 0.01M PBS Buffer (pH 7.2) prior to immunohistochemistry staining.



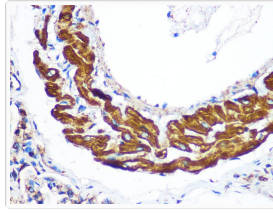
Immunohistochemistry analysis of paraffin-embedded Human placenta using YTHDF2 Rabbit pAb (STJ118064) at dilution of 1:100 (40x lens).  
 Microwave antigen retrieval performed with 0.01M PBS Buffer (pH 7.2) prior to immunohistochemistry staining.



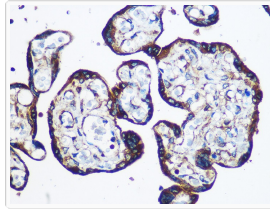
Immunohistochemistry analysis of paraffin-embedded Mouse kidney using YTHDF2 Rabbit pAb (STJ118064) at dilution of 1:100 (40x lens).  
 Microwave antigen retrieval performed with 0.01M PBS Buffer (pH 7.2) prior to immunohistochemistry staining.



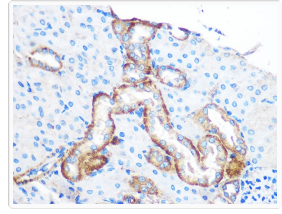
Western blot analysis of lysates from 293T cells, using YTHDF2 Rabbit pAb (STJ118064) at 1:500 dilution.  
 Secondary antibody: HRP-conjugated Goat anti-Rabbit IgG (H+L) (STJS000856) at 1:10000 dilution.  
 Lysates/proteins: 25 Mu g per lane.  
 Blocking buffer: 3% nonfat dry milk in TBST.  
 Detection: ECL Enhanced Kit  
 Exposure time: 90s.



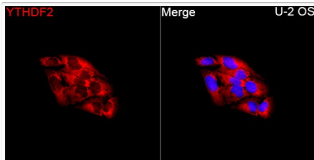
Immunohistochemistry analysis of paraffin-embedded Rat lung using YTHDF2 Rabbit pAb (STJ118064) at dilution of 1:100 (40x lens).  
 Microwave antigen retrieval performed with 0.01M PBS Buffer (pH 7.2) prior to immunohistochemistry staining.



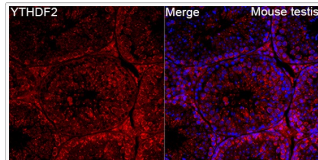
Immunohistochemistry analysis of paraffin-embedded Human placenta using YTHDF2 Rabbit pAb (STJ118064) at dilution of 1:100 (40x lens).  
 Microwave antigen retrieval performed with 0.01M PBS Buffer (pH 7.2) prior to immunohistochemistry staining.



Immunohistochemistry analysis of paraffin-embedded Mouse kidney using YTHDF2 Rabbit pAb (STJ118064) at dilution of 1:100 (40x lens).  
 Microwave antigen retrieval performed with 0.01M PBS Buffer (pH 7.2) prior to immunohistochemistry staining.



Immunofluorescence analysis of U-2 OS cells using YTHDF2 Rabbit pAb (STJ118064) at a dilution of 1:200 (40x lens).  
 Secondary antibody: Cy3-conjugated Goat anti-Rabbit IgG (H+L) (STJS001166) at 1:500 dilution. Blue: DAPI for nuclear staining.



Immunofluorescence analysis of Mouse testis tissue using YTHDF2 Rabbit pAb (STJ118064) at a dilution of 1:200 (40x lens).  
 Secondary antibody: Cy3-conjugated Goat anti-Rabbit IgG (H+L) (STJS001166) at 1:500 dilution. Blue: DAPI for nuclear staining. High pressure antigen retrieval performed with 0.01M Citrate Buffer (pH 6.0) prior to IF staining.