

Anti-GLI3 antibody (681-788) (STJ118062)

GENERAL INFORMATION

Product Type	Primary antibodies
Applications	IHC-P/ELISA
Host / Source	Rabbit
Reactivity	Human/Mouse/Rat

PRODUCT PROPERTIES

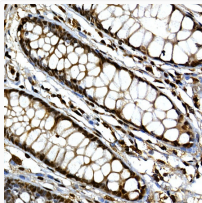
Clonality	Polyclonal
Concentration	Lot specific
Conjugation	Unconjugated
Purification	Affinity purification
Dilution Range	IHC-P:1:50-1:200 ELISA:Recommended starting concentration is 1 µg/mL. Please optimize the concentration based on your specific assay requirements.
Formulation	PBS with 0.05% Proclin300, 50% Glycerol, pH 7.3.
Isotype	IgG
Molecular Weight	Protein Mw: 170kDa Observed Mw: Refer to figures
Storage Instruction	Store at -20°C for up to 1 year from the date of receipt, and avoid repeat freeze-thaw cycles.

TARGET INFORMATION

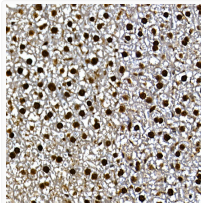
Gene ID	2737
Gene Symbol	GLI3
UniProt ID	GLI3_HUMAN
Immunogen Region	681-788
Immunogen Sequence	NTTSKREECLQVKTVKAEKP MTSQPSPGGQSSCSSQQSPI SNYSNSGLELPLTDGGSIGD LSAIDETPIMDSTISTATTA LALQARRNPAGTKWMEHVKL ERLKQVNG
Specificity	A synthetic peptide corresponding to a sequence within amino acids 681-788 of human GLI3 (NP_000159.3).

ADDITIONAL INFORMATION

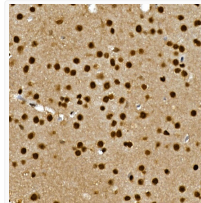
Note STRICTLY FOR FURTHER SCIENTIFIC RESEARCH USE ONLY (RUO). MUST NOT TO BE USED IN DIAGNOSTIC OR THERAPEUTIC APPLICATIONS.



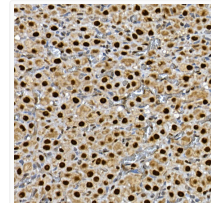
Immunohistochemistry analysis of paraffin-embedded human colon using GLI3 rabbit polyclonal antibody (STJ118062) at dilution of 1:100 (40x lens). Perform high pressure antigen retrieval with 10 mM citrate buffer pH 6.0 before commencing with immunohistochemistry staining protocol.



Immunohistochemistry analysis of paraffin-embedded mouse liver using GLI3 rabbit polyclonal antibody (STJ118062) at dilution of 1:100 (40x lens). Perform high pressure antigen retrieval with 10 mM citrate buffer pH 6.0 before commencing with immunohistochemistry staining protocol.



Immunohistochemistry analysis of paraffin-embedded rat brain using GLI3 rabbit polyclonal antibody (STJ118062) at dilution of 1:100 (40x lens). Perform high pressure antigen retrieval with 10 mM citrate buffer pH 6.0 before commencing with immunohistochemistry staining protocol.



Immunohistochemistry analysis of paraffin-embedded rat ovary using GLI3 rabbit polyclonal antibody (STJ118062) at dilution of 1:100 (40x lens). Perform high pressure antigen retrieval with 10 mM citrate buffer pH 6.0 before commencing with immunohistochemistry staining protocol.