

Anti-APAF1 antibody (470-600) (STJ117996)

GENERAL INFORMATION

Product Type	Primary antibodies
Applications	WB/IF/ICC/ELISA
Host / Source	Rabbit
Reactivity	Human/Mouse/Rat

PRODUCT PROPERTIES

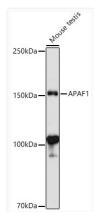
Clonality	Polyclonal
Concentration	Lot specific
Conjugation	Unconjugated
Purification	Affinity purification
Dilution Range	WB:1:500-1:1000 IF/CC:1:50-1:200 ELISA:Recommended starting concentration is 1 Mu g/mL. Please optimize the concentration based on your specific assay requirements.
Formulation	PBS with 0.05% Proclin300, 50% Glycerol, pH 7.3.
Isotype	IgG
Molecular Weight	Protein Mw: 142kDa Observed Mw: 150kDa
Storage Instruction	Store at -20°C for up to 1 year from the date of receipt, and avoid repeat freeze-thaw cycles.

TARGET INFORMATION

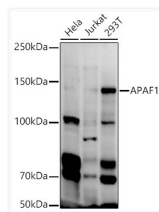
Gene ID	317
Gene Symbol	APAF1
UniProt ID	APAF_HUMAN
Immunogen Region	470-600
Immunogen Sequence	PHTLSPDQEDCMYWYNFLAY HMASAKMHKELCALMFSLDW IKAKTELVGPAHLIHEFVEY RHILDEKDCAVSENFQEFLS LNGHLLGRQPPFNIVQLGLC EPETSEVYQQAKLQAKQEVD NGMLYLEWINK
Specificity	Recombinant fusion protein containing a sequence corresponding to amino acids 470-600 of human APAF1 (NP_863651.1).

ADDITIONAL INFORMATION

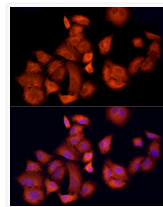
Note STRICTLY FOR FURTHER SCIENTIFIC RESEARCH USE ONLY (RUO). MUST NOT TO BE USED IN DIAGNOSTIC OR THERAPEUTIC APPLICATIONS.



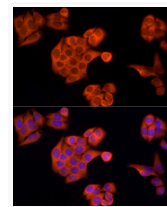
Western blot analysis of extracts of mouse testis, using APAF1 antibody (STJ117996) at 1:1000 dilution. Secondary antibody: HRP Goat Anti-rabbit IgG (H+L) (STJS000856) at 1:10000 dilution. Lysates/proteins: 25 Mu g per lane. Blocking buffer: 3% non-fat dry milk in TBST. Detection: ECL Basic Kit. Exposure time: 180s.



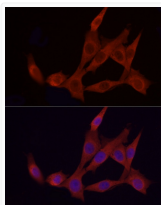
Western blot analysis of extracts of various cell lines, using APAF1 antibody (STJ117996) at 1:1000 dilution. Secondary antibody: HRP Goat Anti-rabbit IgG (H+L) (STJS000856) at 1:10000 dilution. Lysates/proteins: 25 Mu g per lane. Blocking buffer: 3% non-fat dry milk in TBST. Detection: ECL Enhanced Kit. Exposure time: 30s.



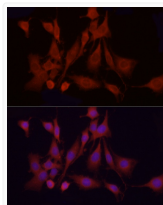
Immunofluorescence analysis of A-549 cells using APAF1 rabbit polyclonal antibody (STJ117996) at dilution of 1:100 (40x lens). Blue: DAPI for nuclear staining.



Immunofluorescence analysis of HeLa cells using APAF1 rabbit polyclonal antibody (STJ117996) at dilution of 1:100 (40x lens). Blue: DAPI for nuclear staining.



Immunofluorescence analysis of NIH/3T3 cells using APAF1 rabbit polyclonal antibody (STJ117996) at dilution of 1:100 (40x lens). Blue: DAPI for nuclear staining.



Immunofluorescence analysis of PC-12 cells using APAF1 rabbit polyclonal antibody (STJ117996) at dilution of 1:100 (40x lens). Blue: DAPI for nuclear staining.