

Anti-Phospho-PLCG1-S1248 antibody (STJ117925)

GENERAL INFORMATION

Product Type	Primary antibodies
Applications	WB/IHC-P/ELISA
Host / Source	Rabbit
Reactivity	Human/Mouse/Rat

PRODUCT PROPERTIES

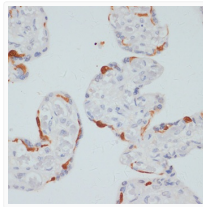
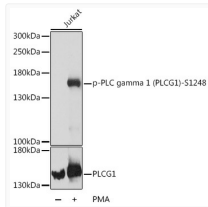
Clonality	Polyclonal
Concentration	Lot specific
Conjugation	Unconjugated
Purification	Affinity purification
Dilution Range	WB:1:500-1:2000 IHC-P:1:10-1:100 ELISA:Recommended starting concentration is 1 µg/mL. Please optimize the concentration based on your specific assay requirements.
Formulation	PBS with 0.01% Thimerosal, 50% Glycerol, pH 7.3.
Isotype	IgG
Molecular Weight	Protein Mw: 149kDa Observed Mw: 149kDa
Storage Instruction	Store at -20°C for up to 1 year from the date of receipt, and avoid repeat freeze-thaw cycles.

TARGET INFORMATION

Gene ID	5335
Gene Symbol	PLCG1
UniProt ID	PLCG1_HUMAN
Immunogen Sequence	REGSF
Specificity	A synthetic phosphorylated peptide around S1248 of human PLC gamma 1 (PLCG1) (NP_002651.2).

ADDITIONAL INFORMATION

Note **STRICTLY FOR FURTHER SCIENTIFIC RESEARCH USE ONLY (RUO). MUST NOT TO BE USED IN DIAGNOSTIC OR THERAPEUTIC APPLICATIONS.**



Western blot analysis of lysates from Jurkat cells, using Phospho-PLC gamma 1 (PLCG1) -S1248 Rabbit pAb (STJ117925) at dilution or PLC gamma 1 (PLCG1) antibody (STJ241894). Jurkat cells were treated by PMA/TPA (200 nM) at 37 °C for 10 minutes.

Secondary antibody: HRP-conjugated Goat anti-Rabbit IgG (H+L) (STJS000856) at 1:10000 dilution.

Lysates/proteins: 25 µg per lane.

Blocking buffer: 3% BSA.

Detection: ECL Basic Kit

Exposure time: 90s.

Immunohistochemistry analysis of paraffin-embedded Human placenta using Phospho-PLC gamma 1 (PLCG1) -S1248 Rabbit pAb (STJ117925) at dilution of 1:100 (40x lens). Microwave antigen retrieval performed with 0.01M Tris/EDTA Buffer (pH 9.0) prior to immunohistochemistry staining.