

## Anti-Phospho-AP2M1-T156 antibody (STJ117921)

### GENERAL INFORMATION

Product Type	Primary antibodies
Applications	WB/ELISA
Host / Source	Rabbit
Reactivity	Human/Mouse

### PRODUCT PROPERTIES

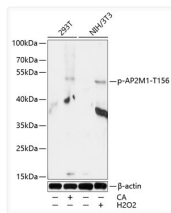
Clonality	Polyclonal
Concentration	Lot specific
Conjugation	Unconjugated
Purification	Affinity purification
Dilution Range	WB:1:500-1:2000 ELISA:Recommended starting concentration is 1 Mu g/mL. Please optimize the concentration based on your specific assay requirements.
Formulation	PBS with 0.01% Thimerosal, 50% Glycerol, pH 7.3.
Isotype	IgG
Molecular Weight	Protein Mw: 50kDa Observed Mw: 50kDa
Storage Instruction	Store at -20°C for up to 1 year from the date of receipt, and avoid repeat freeze-thaw cycles.

### TARGET INFORMATION

Gene ID	<a href="#">1173</a>
Gene Symbol	<a href="#">AP2M1</a>
UniProt ID	<a href="#">AP2M1_HUMAN</a>
Immunogen Sequence	TGQIG
Specificity	A synthetic phosphorylated peptide around T156 of human AP2M1 (NP_001020376.1).

### ADDITIONAL INFORMATION

Note **STRICTLY FOR FURTHER SCIENTIFIC RESEARCH USE ONLY (RUO). MUST NOT TO BE USED IN DIAGNOSTIC OR THERAPEUTIC APPLICATIONS.**



Western blot analysis of lysates from 293T and NIH/3T3 cells, using Phospho-AP2M1-T156 Rabbit pAb (STJ117921) at 1:1000 dilution. 293T cells were treated by Calyculin A for 30 minutes after serum-starvation overnight. NIH/3T3 cells were treated by Hydrogen Peroxide (2nM) for 15 minutes after serum-starvation overnight.

Secondary antibody: HRP-conjugated Goat anti-Rabbit IgG (H+L) (STJS000856) at 1:10000 dilution.

Lysates/proteins: 25 Mu g per lane.

Blocking buffer: 3% BSA.

Detection: ECL Basic Kit

Exposure time: 30s.