

Anti-Phospho-PTPRA-Y789 antibody (STJ117912)

GENERAL INFORMATION

Product Type	Primary antibodies
Applications	WB/ELISA
Host / Source	Rabbit
Reactivity	Human/Mouse/Rat

PRODUCT PROPERTIES

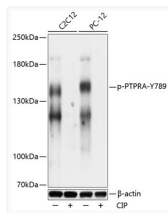
Clonality	Polyclonal
Concentration	Lot specific
Conjugation	Unconjugated
Purification	Affinity purification
Dilution Range	WB:1:500-1:2000 ELISA:Recommended starting concentration is 1 Mu g/mL. Please optimize the concentration based on your specific assay requirements.
Formulation	PBS with 0.01% Thimerosal, 50% Glycerol, pH 7.3.
Isotype	IgG
Molecular Weight	Protein Mw: 91kDa Observed Mw: 145kDa
Storage Instruction	Store at -20°C for up to 1 year from the date of receipt, and avoid repeat freeze-thaw cycles.

TARGET INFORMATION

Gene ID	5786
Gene Symbol	PTPRA
UniProt ID	PTPRA_HUMAN
Immunogen Sequence	SDYAN
Specificity	A synthetic phosphorylated peptide around Y789 of human PTPRA (NP_543030.1).

ADDITIONAL INFORMATION

Note STRICTLY FOR FURTHER SCIENTIFIC RESEARCH USE ONLY (RUO). MUST NOT TO BE USED IN DIAGNOSTIC OR THERAPEUTIC APPLICATIONS.



Western blot analysis of lysates from C2C12 and PC-12 cells, using Phospho-PTPRA-Y789 Rabbit pAb (STJ117912) at 1:1000 dilution. C2C12 cell lysates were treated by CIP (20ul CIP for each 400ul cell lysate) at 37 °C for 1 hour. PC-12 cell lysates were treated by CIP (20ul CIP for each 400ul cell lysate) at 37 °C for 1 hour.

Secondary antibody: HRP-conjugated Goat anti-Rabbit IgG (H+L) (STJS000856) at 1:10000 dilution.

Lysates/proteins: 25 Mu g per lane.

Blocking buffer: 3% BSA.

Detection: ECL Basic Kit

Exposure time: 30s.