

## Anti-Phospho-PLCG2-Y1217 antibody (STJ117903)

### GENERAL INFORMATION

Product Type	Primary antibodies
Applications	WB/IHC-P/ELISA
Host / Source	Rabbit
Reactivity	Human/Mouse

### PRODUCT PROPERTIES

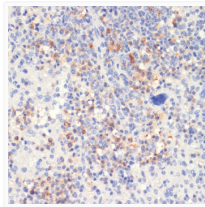
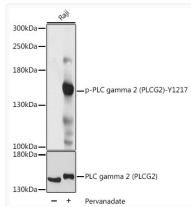
Clonality	Polyclonal
Concentration	Lot specific
Conjugation	Unconjugated
Purification	Affinity purification
Dilution Range	WB:1:500-1:2000 IHC-P:1:50-1:200 ELISA:Recommended starting concentration is 1 µg/mL. Please optimize the concentration based on your specific assay requirements.
Formulation	PBS with 0.05% Proclin300, 50% Glycerol, pH 7.3.
Isotype	IgG
Molecular Weight	Protein Mw: 148kDa Observed Mw: 150kDa
Storage Instruction	Store at -20°C for up to 1 year from the date of receipt, and avoid repeat freeze-thaw cycles.

### TARGET INFORMATION

Gene ID	<a href="#">5336</a>
Gene Symbol	<a href="#">PLCG2</a>
UniProt ID	<a href="#">PLCG2_HUMAN</a>
Immunogen Sequence	FLYDT
Specificity	A synthetic phosphorylated peptide around Y1217 of human PLC gamma 2 (PLCG2) (NP_002652.2).

### ADDITIONAL INFORMATION

Note **STRICTLY FOR FURTHER SCIENTIFIC RESEARCH USE ONLY (RUO). MUST NOT TO BE USED IN DIAGNOSTIC OR THERAPEUTIC APPLICATIONS.**



Western blot analysis of lysates from Raji cells, using Phospho-PLC gamma 2 (PLCG2) -Y1217 Rabbit pAb (STJ117903) at 1:1000 dilution or PLC gamma 2 (PLCG2) antibody (STJ25024). Raji cells were treated by Pervanadate (1 mM) at 37 °C for 30 minutes.

Secondary antibody: HRP-conjugated Goat anti-Rabbit IgG (H+L) (STJS000856) at 1:10000 dilution.

Lysates/proteins: 25 µg per lane.

Blocking buffer: 3% BSA.

Detection: ECL Basic Kit

Exposure time: 1s.

Immunohistochemistry analysis of paraffin-embedded Mouse spleen using Phospho-PLC gamma 2 (PLCG2) -Y1217 Rabbit pAb (STJ117903) at dilution of 1:100 (40x lens). Microwave antigen retrieval performed with 0.01M Tris/EDTA Buffer (pH 9.0) prior to immunohistochemistry staining.