

Anti-Phospho-CBX3-S83 antibody (STJ117899)

GENERAL INFORMATION

Product Type	Primary antibodies
Applications	WB/ELISA
Host / Source	Rabbit
Reactivity	Human/Mouse

PRODUCT PROPERTIES

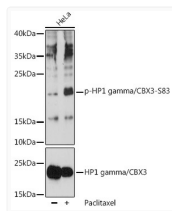
Clonality	Polyclonal
Concentration	Lot specific
Conjugation	Unconjugated
Purification	Affinity purification
Dilution Range	WB:1:500-1:1000 ELISA:Recommended starting concentration is 1 Mu g/mL. Please optimize the concentration based on your specific assay requirements.
Formulation	PBS with 0.01% Thimerosal, 50% Glycerol, pH 7.3.
Isotype	IgG
Molecular Weight	Protein Mw: 21kDa Observed Mw: 22kDa
Storage Instruction	Store at -20°C for up to 1 year from the date of receipt, and avoid repeat freeze-thaw cycles.

TARGET INFORMATION

Gene ID	11335
Gene Symbol	CBX3
UniProt ID	CBX3_HUMAN
Immunogen Sequence	RKSLs
Specificity	A synthetic phosphorylated peptide around S83 of human HP1 gamma/CBX3 (NP_009207.2).

ADDITIONAL INFORMATION

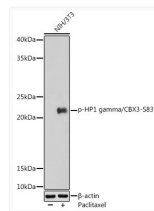
Note **STRICTLY FOR FURTHER SCIENTIFIC RESEARCH USE ONLY (RUO). MUST NOT TO BE USED IN DIAGNOSTIC OR THERAPEUTIC APPLICATIONS.**



Western blot analysis of lysates from HeLa cells, using Phospho-HP1 gamma/CBX3-S83 pAb (STJ117899) at 1:1000 dilution or HP1 gamma/CBX3 antibody (STJ22921). HeLa cells were treated by Paclitaxel (100 nM/mL) at 37 °C for 20 hours.

Secondary antibody: HRP-conjugated Goat anti-Rabbit IgG (H+L) (STJS000856) at 1:10000 dilution.

Lysates/proteins: 25 Mu g per lane.
 Blocking buffer: 3% BSA.
 Detection: ECL Basic Kit
 Exposure time: 60s.



Western blot analysis of lysates from NIH/3T3 cells, using Phospho-HP1 gamma/CBX3-S83 Rabbit pAb (STJ117899) at 1:1000 dilution. NIH/3T3 cells were treated by Paclitaxel (100 nM) at 37 °C for 20 hours.

Secondary antibody: HRP-conjugated Goat anti-Rabbit IgG (H+L) (STJS000856) at 1:10000 dilution.

Lysates/proteins: 25 Mu g per lane.
 Blocking buffer: 3% nonfat dry milk in TBST.
 Detection: ECL Enhanced Kit
 Exposure time: 180s.