

Anti-Phospho-CTNNB1-S675 antibody (STJ117893)

GENERAL INFORMATION

Product Type	Primary antibodies
Applications	WB/IF/ICC/ELISA
Host / Source	Rabbit
Reactivity	Human/Mouse/Rat

PRODUCT PROPERTIES

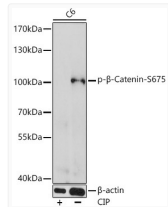
Clonality	Polyclonal
Concentration	Lot specific
Conjugation	Unconjugated
Purification	Affinity purification
Dilution Range	WB:1:500-1:2000 IF/CC:1:50-1:200 ELISA:Recommended starting concentration is 1 Mu g/mL. Please optimize the concentration based on your specific assay requirements.
Formulation	PBS with 0.05% Proclin300, 50% Glycerol, pH 7.3.
Isotype	IgG
Molecular Weight	Protein Mw: 85kDa Observed Mw: 100kDa
Storage Instruction	Store at -20°C for up to 1 year from the date of receipt, and avoid repeat freeze-thaw cycles.

TARGET INFORMATION

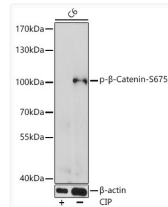
Gene ID	1499
Gene Symbol	CTNNB1
UniProt ID	CTNB1_HUMAN
Immunogen Sequence	RLSVE
Specificity	A synthetic phosphorylated peptide around S675 of human beta Catenin (NP_001091679.1).

ADDITIONAL INFORMATION

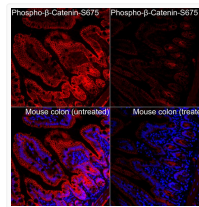
Note **STRICTLY FOR FURTHER SCIENTIFIC RESEARCH USE ONLY (RUO). MUST NOT TO BE USED IN DIAGNOSTIC OR THERAPEUTIC APPLICATIONS.**



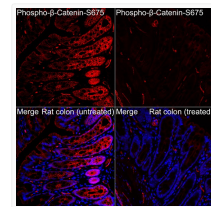
Western blot analysis of lysates from C6 cells, using Phospho-Beta-Catenin-S675 Rabbit pAb (STJ117893) at 1:10000 dilution. C6 cell lysates were treated by CIP at 37°C for 1 hour. Secondary antibody: HRP-conjugated Goat anti-Rabbit IgG (H+L) (STJS000856) at 1:10000 dilution. Lysates/proteins: 25 Mu g per lane. Blocking buffer: 3% BSA. Detection: ECL Enhanced Kit Exposure time: 180s.



Western blot analysis of lysates from C6 cells, using Phospho-β-Catenin-S675 Rabbit pAb (STJ117893) at 1:10000 dilution. C6 cell lysates were treated by CIP at 37°C for 1 hour. Secondary antibody: HRP-conjugated Goat anti-Rabbit IgG (H+L) (STJS000856) at 1:10000 dilution. Lysates/proteins: 25 Mu g per lane. Blocking buffer: 3% BSA. Detection: ECL Enhanced Kit Exposure time: 180s.



Immunofluorescence analysis of Mouse colon (treated with I^νPP) and Mouse colon (untreated) tissue using Phospho-β-Catenin-S675 Rabbit pAb (STJ117893) at a dilution of 1:100 (40x lens). Secondary antibody: Cy3-conjugated Goat anti-Rabbit IgG (H+L) (STJS001166) at 1:500 dilution. Blue: DAPI for nuclear staining. High pressure antigen retrieval performed with 0. 01M Citrate Buffer (pH 6. 0) prior to IF staining.



Immunofluorescence analysis of Rat colon (treated with I^νPP) and Rat colon tissue using Phospho-β-Catenin-S675 Rabbit pAb (STJ117893) at a dilution of 1:100 (40x lens). Secondary antibody: Cy3-conjugated Goat anti-Rabbit IgG (H+L) (STJS001166) at 1:500 dilution. Blue: DAPI for nuclear staining. High pressure antigen retrieval performed with 0. 01M Citrate Buffer (pH 6. 0) prior to IF staining.