

## Anti-Phospho-PPP1CA-T320 antibody (STJ117884)

### GENERAL INFORMATION

Product Type	Primary antibodies
Applications	WB/IHC-P/ELISA
Host / Source	Rabbit
Reactivity	Human/Mouse/Rat

### PRODUCT PROPERTIES

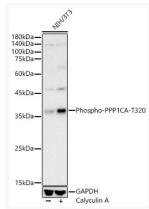
Clonality	Polyclonal
Concentration	Lot specific
Conjugation	Unconjugated
Purification	Affinity purification
Dilution Range	WB:1:500-1:2000 IHC-P:1:50-1:100 ELISA:Recommended starting concentration is 1 µg/mL. Please optimize the concentration based on your specific assay requirements.
Formulation	PBS with 0.05% Proclin300, 50% Glycerol, pH 7.3.
Isotype	IgG
Molecular Weight	Protein Mw: 38kDa Observed Mw: 38kDa
Storage Instruction	Store at -20°C for up to 1 year from the date of receipt, and avoid repeat freeze-thaw cycles.

### TARGET INFORMATION

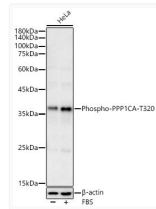
Gene ID	<a href="#">5499</a>
Gene Symbol	<a href="#">PPP1CA</a>
UniProt ID	<a href="#">PP1A_HUMAN</a>
Immunogen Sequence	PITPP
Specificity	A synthetic phosphorylated peptide around T320 of human PPP1CA (NP_002699.1).

### ADDITIONAL INFORMATION

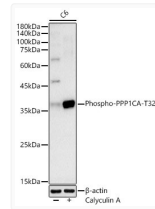
Note **STRICTLY FOR FURTHER SCIENTIFIC RESEARCH USE ONLY (RUO). MUST NOT TO BE USED IN DIAGNOSTIC OR THERAPEUTIC APPLICATIONS.**



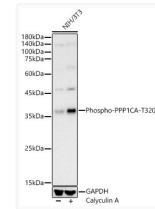
Western blot analysis of lysates from NIH/3T3 cells using Phospho-PPP1CA-T320 Rabbit pAb (STJ117884) at 1:500 dilution. NIH/3T3 cells were treated by Calyculin A (100 nM) at 37 °C for 30 minutes after serum-starvation overnight. Secondary antibody: HRP-conjugated Goat anti-Rabbit IgG (H+L) (STJS000856) at 1:10000 dilution. Lysates/proteins: 25 µg per lane. Blocking buffer: 3% nonfat dry milk in TBST. Detection: ECL Basic Kit. Exposure time: 60s.



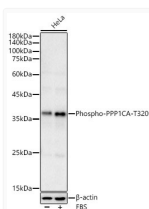
Western blot analysis of lysates from HeLa cells using Phospho-PPP1CA-T320 Rabbit pAb (STJ117884) at 1:500 dilution. HeLa cells were treated by 10% FBS at 37 °C for 30 minutes after serum-starvation overnight. Secondary antibody: HRP-conjugated Goat anti-Rabbit IgG (H+L) (STJS000856) at 1:10000 dilution. Lysates/proteins: 25 µg per lane. Blocking buffer: 3% nonfat dry milk in TBST. Detection: ECL Enhanced Kit. Exposure time: 30s.



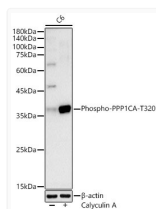
Western blot analysis of lysates from C6 cells using Phospho-PPP1CA-T320 Rabbit pAb (STJ117884) at 1:500 dilution. C6 cells were treated by tunicamycin (2 µg/ml) for 8 hours. Secondary antibody: HRP-conjugated Goat anti-Rabbit IgG (H+L) (STJS000856) at 1:10000 dilution. Lysates/proteins: 25 µg per lane. Blocking buffer: 3% nonfat dry milk in TBST. Detection: ECL Basic Kit. Exposure time: 60s.



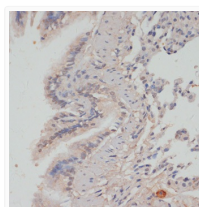
Western blot analysis of lysates from NIH/3T3 cells using Phospho-PPP1CA-T320 Rabbit pAb (STJ117884) at 1:500 dilution. NIH/3T3 cells were treated by Calyculin A (100 nM) at 37C for 30 minutes after serum-starvation overnight. Secondary antibody: HRP-conjugated Goat anti-Rabbit IgG (H+L) (STJS000856) at 1:10000 dilution. Lysates/proteins: 25 µg per lane. Blocking buffer: 3% nonfat dry milk in TBST. Detection: ECL Basic Kit. Exposure time: 60s.



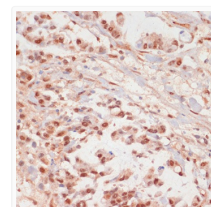
Western blot analysis of lysates from HeLa cells using Phospho-PPP1CA-T320 Rabbit pAb (STJ117884) at 1:500 dilution. HeLa cells were treated by 10% FBS at 37C for 30 minutes after serum-starvation overnight. Secondary antibody: HRP-conjugated Goat anti-Rabbit IgG (H+L) (STJS000856) at 1:10000 dilution. Lysates/proteins: 25 µg per lane. Blocking buffer: 3% nonfat dry milk in TBST. Detection: ECL Basic Kit. Exposure time: 30s.



Western blot analysis of lysates from C6 cells using Phospho-PPP1CA-T320 Rabbit pAb (STJ117884) at 1:500 dilution. C6 cells were treated by tunicamycin (2 µg/ml) for 8 hours. Secondary antibody: HRP-conjugated Goat anti-Rabbit IgG (H+L) (STJS000856) at 1:10000 dilution. Lysates/proteins: 25 µg per lane. Blocking buffer: 3% nonfat dry milk in TBST. Detection: ECL Basic Kit. Exposure time: 60s.



Immunohistochemistry analysis of paraffin-embedded Rat lung using Phospho-PPP1CA-T320 Rabbit pAb (STJ117884) at dilution of 1:100 (40x lens). Microwave antigen retrieval performed with 0.01M Tris/EDTA Buffer (pH 9.0) prior to immunohistochemistry staining.



Immunohistochemistry analysis of paraffin-embedded Human gastric cancer using Phospho-PPP1CA-T320 Rabbit pAb (STJ117884) at dilution of 1:100 (40x lens). Microwave antigen retrieval performed with 0.01M Tris/EDTA Buffer (pH 9.0) prior to immunohistochemistry staining.