

Anti-Phospho-RAF1-S338 antibody (STJ117871)

GENERAL INFORMATION

Product Type	Primary antibodies
Applications	WB/IHC-P/ELISA
Host / Source	Rabbit
Reactivity	Human/Mouse/Rat

PRODUCT PROPERTIES

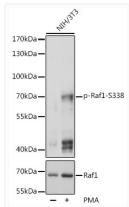
Clonality	Polyclonal
Concentration	Lot specific
Conjugation	Unconjugated
Purification	Affinity purification
Dilution Range	WB:1:500-1:2000 IHC-P:1:50-1:200 ELISA:Recommended starting concentration is 1 µg/mL. Please optimize the concentration based on your specific assay requirements.
Formulation	PBS with 0.02% Sodium Azide, 50% Glycerol, pH 7.3.
Isotype	IgG
Molecular Weight	Protein Mw: 73kDa Observed Mw: 73kDa
Storage Instruction	Store at -20°C for up to 1 year from the date of receipt, and avoid repeat freeze-thaw cycles.

TARGET INFORMATION

Gene ID	5894
Gene Symbol	RAF1
UniProt ID	RAF1_HUMAN
Immunogen Sequence	RDSSY
Specificity	A synthetic phosphorylated peptide around S338 of human Phospho-Raf1-S338 (NP_002871.1).

ADDITIONAL INFORMATION

Note **STRICTLY FOR FURTHER SCIENTIFIC RESEARCH USE ONLY (RUO). MUST NOT TO BE USED IN DIAGNOSTIC OR THERAPEUTIC APPLICATIONS.**



Western blot analysis of lysates from NIH/3T3 cells, using Phospho-Raf1-S338 pAb (STJ117871) at 1:1000 dilution or Phospho-Raf1-S338 antibody (STJ25284). NIH/3T3 cells were treated by PMA/TPA (200nM) for 30 minutes after serum-starvation overnight.

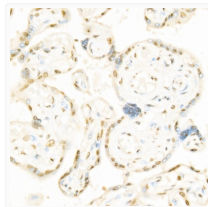
Secondary antibody: HRP-conjugated Goat anti-Rabbit IgG (H+L) (STJS000856) at 1:10000 dilution.

Lysates/proteins: 25 µg per lane.

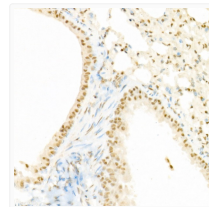
Blocking buffer: 3% BSA.

Detection: ECL Basic Kit

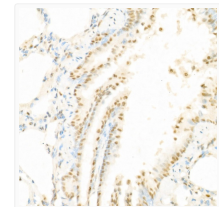
Exposure time: 5s.



Immunohistochemistry analysis of paraffin-embedded Human placenta using Phospho-Raf1-S338 Rabbit pAb (STJ117871) at dilution of 1:50 (40x lens). High pressure antigen retrieval performed with 0.01M Citrate Buffer (pH 6.0) prior to immunohistochemistry staining.



Immunohistochemistry analysis of paraffin-embedded Mouse lung using Phospho-Raf1-S338 Rabbit pAb (STJ117871) at dilution of 1:50 (40x lens). High pressure antigen retrieval performed with 0.01M Citrate Buffer (pH 6.0) prior to immunohistochemistry staining.



Immunohistochemistry analysis of paraffin-embedded Rat lung using Phospho-Raf1-S338 Rabbit pAb (STJ117871) at dilution of 1:50 (40x lens). High pressure antigen retrieval performed with 0.01M Citrate Buffer (pH 6.0) prior to immunohistochemistry staining.