

Anti-ENTPD5 antibody (149-428) (STJ117847)

GENERAL INFORMATION

Product Type	Primary antibodies
Applications	IF/ICC/ELISA
Host / Source	Rabbit
Reactivity	Human

PRODUCT PROPERTIES

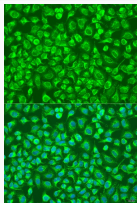
Clonality	Polyclonal
Concentration	Lot specific
Conjugation	Unconjugated
Purification	Affinity purification
Dilution Range	IF/ICC:1:50-1:200 ELISA: Recommended starting concentration is 1 µg/mL. Please optimize the concentration based on your specific assay requirements.
Formulation	PBS with 0.02% Sodium Azide, 50% Glycerol, pH 7.3.
Isotype	IgG
Molecular Weight	Protein Mw: 48kDa Observed Mw:
Storage Instruction	Store at -20°C for up to 1 year from the date of receipt, and avoid repeat freeze-thaw cycles.

TARGET INFORMATION

Gene ID	957
Gene Symbol	ENTPD5
UniProt ID	ENTP5_HUMAN
Immunogen Region	149-428
Immunogen Sequence	KEIFRKSPFLVPKGSVSIMD GSDEGILAWVTVNFLTGQLH GHRQETVGTLDLGGASTQIT FLPQFEKTLTQTPRGYLTSEMFNSTYKLYTHSYLGFLK AARLATLGALETEGTDGHTF RSACLPRWLEAEWIFGGVKY QYGGNQEGEVGFEPCEAEVL RVVRGKLVQPEEVQRGSFYA FSYYYDRAVDTDIMIDYEKGG ILKVEDFERKAREVCDNLEN FTSGSPFLCMDLSYITALL
Specificity	Recombinant fusion protein containing a sequence corresponding to amino acids 149-428 of human ENTPD5 (NP_001240.1).

ADDITIONAL INFORMATION

Note	STRICTLY FOR FURTHER SCIENTIFIC RESEARCH USE ONLY (RUO). MUST NOT TO BE USED IN DIAGNOSTIC OR THERAPEUTIC APPLICATIONS.
------	---



Immunofluorescence analysis of U2OS cells using ENTPD5 Rabbit pAb (STJ117847) at dilution of 1:100. Secondary antibody: Cy3-conjugated Goat anti-Rabbit IgG (H+L) (STJS001166) at 1:500 dilution. Blue: DAPI for nuclear staining.