

Anti-PFKL antibody (700-780) (STJ117838)

GENERAL INFORMATION

Product Type	Primary antibodies
Applications	WB/IF/ICC/ELISA
Host / Source	Rabbit
Reactivity	Human/Mouse/Rat

PRODUCT PROPERTIES

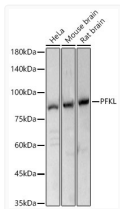
Clonality	Polyclonal
Concentration	Lot specific
Conjugation	Unconjugated
Purification	Affinity purification
Dilution Range	WB:1:500-1:1000 IF/CC:1:50-1:200 ELISA:Recommended starting concentration is 1 μ g/mL. Please optimize the concentration based on your specific assay requirements.
Formulation	PBS with 0.05% Proclin300, 50% Glycerol, pH 7.3.
Isotype	IgG
Molecular Weight	Protein Mw: 85kDa Observed Mw: 85kDa
Storage Instruction	Store at -20°C for up to 1 year from the date of receipt, and avoid repeat freeze-thaw cycles.

TARGET INFORMATION

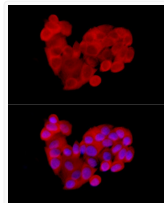
Gene ID	5211
Gene Symbol	PFKL
UniProt ID	PFKAL_HUMAN
Immunogen Region	700-780
Immunogen Sequence	FANAPDSACVIGLKKKAVAF SPVTELEKDDDFEHRMPREQ WWLSLRLMLKMLAQYRISMA AYVSGELEHVTRRTLSMDKG F
Specificity	Recombinant fusion protein containing a sequence corresponding to amino acids 700-780 of human PFKL (NP_002617.3).

ADDITIONAL INFORMATION

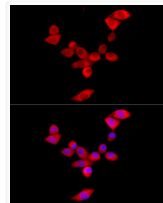
Note STRICTLY FOR FURTHER SCIENTIFIC RESEARCH USE ONLY (RUO). MUST NOT TO BE USED IN DIAGNOSTIC OR THERAPEUTIC APPLICATIONS.



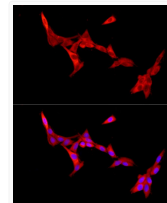
Western blot analysis of various lysates, using PFKL rabbit polyclonal antibody (STJ117838) at 1:3070 dilution. Secondary antibody: HRP Goat Anti-rabbit IgG (H+L) (STJS000856) at 1:10000 dilution. Lysates/proteins: 25 μ g per lane. Blocking buffer: 3% non-fat dry milk in TBST. Detection: ECL Basic Kit. Exposure time: 1s.



Immunofluorescence analysis of MCF7 cells using PFKL rabbit polyclonal antibody (STJ117838) at dilution of 1:300 (40x lens). Blue: DAPI for nuclear staining.



Immunofluorescence analysis of NIH/3T3 cells using PFKL rabbit polyclonal antibody (STJ117838) at dilution of 1:300 (40x lens). Blue: DAPI for nuclear staining.



Immunofluorescence analysis of PC-12 cells using PFKL rabbit polyclonal antibody (STJ117838) at dilution of 1:300 (40x lens). Blue: DAPI for nuclear staining.