

## Anti-CD2 antibody (235-351) (STJ117816)

### GENERAL INFORMATION

|               |                    |
|---------------|--------------------|
| Product Type  | Primary antibodies |
| Applications  | WB/IHC-P/ELISA     |
| Host / Source | Rabbit             |
| Reactivity    | Human              |

### PRODUCT PROPERTIES

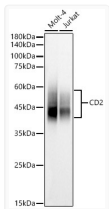
|                     |  |
|---------------------|--|
| Clonality           | Polyclonal   |
| Concentration       | Lot specific   |
| Conjugation         | Unconjugated   |
| Purification        | Affinity purification  |
| Dilution Range      | WB:1:500-1:1000<br>IHC-P:1:50-1:200<br>ELISA:Recommended starting concentration is 1 µg/mL. Please optimize the concentration based on your specific assay requirements. |
| Formulation         | PBS with 0.05% Proclin300, 50% Glycerol, pH 7.3.   |
| Isotype             | IgG  |
| Molecular Weight    | Protein Mw: 39kDa<br>Observed Mw: 39-58kDa   |
| Storage Instruction | Store at -20°C for up to 1 year from the date of receipt, and avoid repeat freeze-thaw cycles.   |

### TARGET INFORMATION

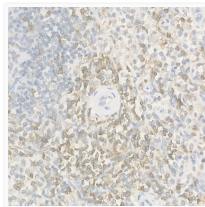
|                    |   |
|--------------------|---|
| Gene ID            | <a href="#">914</a>   |
| Gene Symbol        | <a href="#">CD2</a>   |
| UniProt ID         | <a href="#">CD2_HUMAN</a>   |
| Immunogen Region   | 235-351   |
| Immunogen Sequence | TKRKKQRSRRNDEELETTRAH RVATEERGRKPHQIPASTPQ NPATSQHPPPPPGHRSQAPS<br>HRPPPPGHRVQHQPQKRPPA PSGTQVHQKGPPLPRPRVQ PKPPHGA AENSLS PSSN |
| Specificity        | Recombinant fusion protein containing a sequence corresponding to amino acids 235-351 of human CD2 (NP_001758.2).               |

### ADDITIONAL INFORMATION

Note STRICTLY FOR FURTHER SCIENTIFIC RESEARCH USE ONLY (RUO). MUST NOT TO BE USED IN DIAGNOSTIC OR THERAPEUTIC APPLICATIONS.



Western blot analysis of various lysates, using CD2 antibody (STJ117816) at 1:1000 dilution. Secondary antibody: HRP Goat Anti-rabbit IgG (H+L) (STJS000856) at 1:10000 dilution. Lysates/proteins: 25 µg per lane. Blocking buffer: 3% non-fat dry milk in TBST. Detection: ECL Basic Kit. Exposure time: 20s.



Immunohistochemistry analysis of paraffin-embedded human tonsil using CD2 rabbit polyclonal antibody (STJ117816) at dilution of 1:100 (40x lens). Perform high pressure antigen retrieval with 10 mM citrate buffer pH 6.0 before commencing with immunohistochemistry staining protocol.