

Anti-DUT antibody (89-252) (STJ117799)

GENERAL INFORMATION

Product Type	Primary antibodies
Applications	WB/IHC-P/IF/ICC/ELISA
Host / Source	Rabbit
Reactivity	Human/Mouse/Rat

PRODUCT PROPERTIES

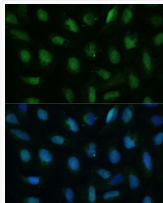
Clonality	Polyclonal
Concentration	Lot specific
Conjugation	Unconjugated
Purification	Affinity purification
Dilution Range	WB:1:500-1:1000 IHC-P:1:50-1:200 IF/ICC:1:100-1:200 ELISA:Recommended starting concentration is 1 Mu g/mL. Please optimize the concentration based on your specific assay requirements.
Formulation	PBS with 0.01% Thimerosal, 50% Glycerol, pH 7.3.
Isotype	IgG
Molecular Weight	Protein Mw: 27kDa Observed Mw: 24kDa
Storage Instruction	Store at -20°C for up to 1 year from the date of receipt, and avoid repeat freeze-thaw cycles.

TARGET INFORMATION

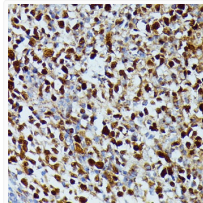
Gene ID	1854
Gene Symbol	DUT
UniProt ID	DUT_HUMAN
Immunogen Region	89-252
Immunogen Sequence	PAPGPETPAISPSKRARPAE VGGMQLRFARLSEHATAPTR GSARAAGYDLYSAYDYTIPP MEKAVVKTDIQIALPSGCYGVAPRSLAALKHFIDVGAGV IDEDYRGNVGVVLFNFGKEK FEVKKGDRIAQLICERIFYP EIEEVQALDDTERGSGGFGS TGKN
Specificity	Recombinant fusion protein containing a sequence corresponding to amino acids 89-252 of human DUT (NP_001020419.1).

ADDITIONAL INFORMATION

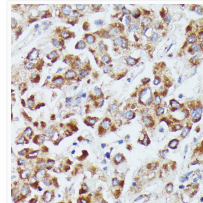
Note STRICTLY FOR FURTHER SCIENTIFIC RESEARCH USE ONLY (RUO). MUST NOT TO BE USED IN DIAGNOSTIC OR THERAPEUTIC APPLICATIONS.



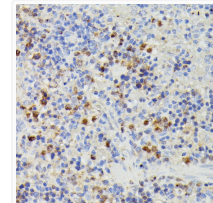
Immunofluorescence analysis of U-2 OS cells using DUT Rabbit polyclonal antibody (STJ117799) at dilution of 1:100 (40x lens). Secondary antibody: Cy3 Goat Anti-Rabbit IgG (H+L) at 1:500 dilution. Blue: DAPI for nuclear staining.



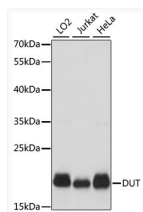
Immunohistochemistry analysis of DUT in paraffin-embedded human appendix using DUT Rabbit polyclonal antibody (STJ117799) at dilution of 1:100 (40x lens). Perform microwave antigen retrieval with 10 mM PBS buffer pH 7.2 before commencing with immunohistochemistry staining protocol.



Immunohistochemistry analysis of DUT in paraffin-embedded human liver cancer using DUT Rabbit polyclonal antibody (STJ117799) at dilution of 1:100 (40x lens). Perform microwave antigen retrieval with 10 mM PBS buffer pH 7.2 before commencing with immunohistochemistry staining protocol.



Immunohistochemistry analysis of DUT in paraffin-embedded rat spleen using DUT Rabbit polyclonal antibody (STJ117799) at dilution of 1:100 (40x lens). Perform microwave antigen retrieval with 10 mM PBS buffer pH 7.2 before commencing with immunohistochemistry staining protocol.



Western blot analysis of various lysates using DUT Rabbit polyclonal antibody (STJ117799) at 1:1000 dilution. Secondary antibody: HRP Goat Anti-Rabbit IgG (H+L) (STJS000856) at 1:10000 dilution. Lysates/proteins: 25 Mu g per lane. Blocking buffer: 3% nonfat dry milk in TBST. Detection: ECL Basic Kit. Exposure time: 3s.