

Anti-ADORA2B antibody (100-200) (STJ117791)

GENERAL INFORMATION

Product Type	Primary antibodies
Applications	WB/IF/ICC/ELISA
Host / Source	Rabbit
Reactivity	Human/Rat

PRODUCT PROPERTIES

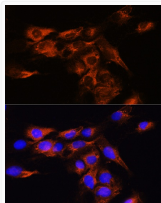
Clonality	Polyclonal
Concentration	Lot specific
Conjugation	Unconjugated
Purification	Affinity purification
Dilution Range	WB:1:100-1:500 IF/CC:1:50-1:200 ELISA:Recommended starting concentration is 1 Mu g/mL. Please optimize the concentration based on your specific assay requirements.
Formulation	PBS with 0.05% Proclin300, 50% Glycerol, pH 7.3.
Isotype	IgG
Molecular Weight	Protein Mw: 36kDa Observed Mw: 36kDa
Storage Instruction	Store at -20°C for up to 1 year from the date of receipt, and avoid repeat freeze-thaw cycles.

TARGET INFORMATION

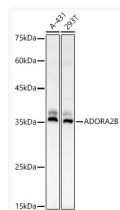
Gene ID	136
Gene Symbol	ADORA2B
UniProt ID	AA2BR_HUMAN
Immunogen Region	100-200
Immunogen Sequence	AVDRYLAIQVPLRYKSLVTG TRARGVIAVLWVLAFGIGLT PFLGWNSKDSATNNCTEPWD GTTNESCCLVKCLFENVVPM SYMVYFNFFGCVLPPLLIML V
Specificity	A synthetic peptide corresponding to a sequence within amino acids 100-200 of human ADORA2B (NP_000667.1).

ADDITIONAL INFORMATION

Note STRICTLY FOR FURTHER SCIENTIFIC RESEARCH USE ONLY (RUO). MUST NOT TO BE USED IN DIAGNOSTIC OR THERAPEUTIC APPLICATIONS.



Immunofluorescence analysis of C6 cells using ADORA2B Rabbit polyclonal antibody (STJ117791) at dilution of 1:100. Blue: DAPI for nuclear staining.



Western blot analysis of various lysates, using ADORA2B antibody (STJ117791) at 1:400 dilution. Secondary antibody: HRP Goat Anti-Rabbit IgG (H+L) (STJS000856) at 1:10000 dilution. Lysates/proteins: 25 Mu g per lane. Blocking buffer: 3% nonfat dry milk in TBST. Detection: ECL Basic Kit. Exposure time: 45s.