

Anti-P2RY12 antibody (303-313) (STJ117783)

GENERAL INFORMATION

Product Type	Primary antibodies
Applications	WB/IF/ICC/ELISA
Host / Source	Rabbit
Reactivity	Human/Mouse/Rat

PRODUCT PROPERTIES

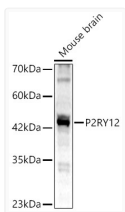
Clonality	Polyclonal
Concentration	Lot specific
Conjugation	Unconjugated
Purification	Affinity purification
Dilution Range	WB:1:1000-1:5000 IF/CC:1:50-1:200 ELISA:Recommended starting concentration is 1 μ g/mL. Please optimize the concentration based on your specific assay requirements.
Formulation	PBS with 0.05% Proclin300, 50% Glycerol, pH 7.3.
Isotype	IgG
Molecular Weight	Protein Mw: 39kDa Observed Mw: 45kDa
Storage Instruction	Store at -20°C for up to 1 year from the date of receipt, and avoid repeat freeze-thaw cycles.

TARGET INFORMATION

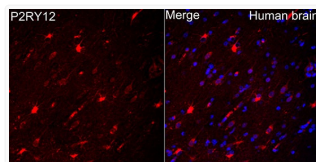
Gene ID	64805
Gene Symbol	P2RY12
UniProt ID	P2Y12_HUMAN
Immunogen Region	303-313
Immunogen Sequence	AVFFICFVPFHFARIPYTLS QTRDVFDC TAENTLFYVKES TLWLTS LNACLDPFIYFFLC KSF RNSLISMLKCPNSATSL SQDNRKKEQDGGDPNEETPM
Specificity	A synthetic peptide corresponding to a sequence within amino acids 243-342 of human P2RY12 (NP_795345.1).

ADDITIONAL INFORMATION

Note STRICTLY FOR FURTHER SCIENTIFIC RESEARCH USE ONLY (RUO). MUST NOT TO BE USED IN DIAGNOSTIC OR THERAPEUTIC APPLICATIONS.



Western blot analysis of lysates from mouse brain using P2RY12 rabbit polyclonal antibody (STJ117783) at 1:2000 dilution. Secondary antibody:HRP Goat Anti-rabbit IgG (H+L) (STJS00856) at 1:10000 dilution. Lysates/proteins: 25 μ g per lane. Blocking buffer: 3% non-fat dry milk in TBST. Detection:ECL Basic Kit. Exposure time:45s.



Immunofluorescence analysis of human brain using P2RY12 rabbit polyclonal antibody (STJ117783) at dilution of 1:200 (40x lens). Secondary antibody: Cy3 Goat Anti-rabbit IgG (H+L) at 1:500 dilution. Blue: DAPI for nuclear staining. Perform high pressure antigen retrieval with 10 mM citrate buffer pH 6.0 before commencing with IF staining protocol.