

Anti-CSF1 antibody (33-190) (STJ117781)

GENERAL INFORMATION

Product Type	Primary antibodies
Applications	WB/ELISA
Host / Source	Rabbit
Reactivity	Human/Mouse/Rat

PRODUCT PROPERTIES

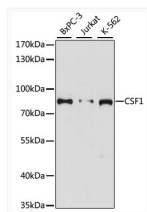
Clonality	Polyclonal
Concentration	Lot specific
Conjugation	Unconjugated
Purification	Affinity purification
Dilution Range	WB:1:500-1:2000 ELISA:Recommended starting concentration is 1 Mu g/mL. Please optimize the concentration based on your specific assay requirements.
Formulation	PBS with 0.05% Proclin300, 50% Glycerol, pH 7.3.
Isotype	IgG
Molecular Weight	Protein Mw: 60kDa Observed Mw: 80kDa
Storage Instruction	Store at -20°C for up to 1 year from the date of receipt, and avoid repeat freeze-thaw cycles.

TARGET INFORMATION

Gene ID	1435
Gene Symbol	CSF1
UniProt ID	CSF1_HUMAN
Immunogen Region	33-190
Immunogen Sequence	EEVSEYCSHMIGSGHLQSLQ RLIDSQMETSCQITFEFVDQ EQLKDPVCYLKKAFLLVQDI MEDTMRFRDNTPNIAIVQL QELSLRLKSCFTKDYEEHDK ACVRTFYETPLQLLEKVKNV FNETKNLLDKDWNIFSKNCN NSFAECSSQDVTTPDCN
Specificity	Recombinant fusion protein containing a sequence corresponding to amino acids 33-190 of human CSF1 (NP_757351.1).

ADDITIONAL INFORMATION

Note STRICTLY FOR FURTHER SCIENTIFIC RESEARCH USE ONLY (RUO). MUST NOT TO BE USED IN DIAGNOSTIC OR THERAPEUTIC APPLICATIONS.



Western blot analysis of extracts of various cell lines, using CSF1 antibody (STJ117781) at 1:3000 dilution. Secondary antibody: HRP Goat Anti-Rabbit IgG (H+L) (STJS000856) at 1:10000 dilution. Lysates/proteins: 25 Mu g per lane. Blocking buffer: 3% nonfat dry milk in TBST. Detection: ECL Basic Kit. Exposure time: 90s.