

## Anti-GSTT2B antibody (115-244) (STJ117778)

### GENERAL INFORMATION

Product Type	Primary antibodies
Applications	WB/IF/ICC/ELISA
Host / Source	Rabbit
Reactivity	Human/Mouse/Rat

### PRODUCT PROPERTIES

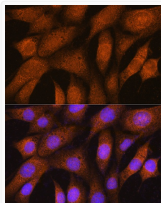
Clonality	Polyclonal
Concentration	Lot specific
Conjugation	Unconjugated
Purification	Affinity purification
Dilution Range	WB:1:200-1:2000 IF/CC:1:50-1:200 ELISA:Recommended starting concentration is 1 Mu g/mL. Please optimize the concentration based on your specific assay requirements.
Formulation	PBS with 0.01% Thimerosal, 50% Glycerol, pH 7.3.
Isotype	IgG
Molecular Weight	Protein Mw: 28kDa Observed Mw: 27kDa
Storage Instruction	Store at -20°C for up to 1 year from the date of receipt, and avoid repeat freeze-thaw cycles.

### TARGET INFORMATION

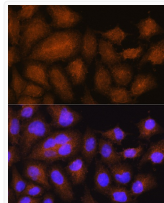
Gene ID	<a href="#">653689</a>
Gene Symbol	<a href="#">GSTT2B</a>
UniProt ID	<a href="#">GSTT2_HUMAN</a>
Immunogen Region	115-244
Immunogen Sequence	WVQVLGPLIGVQVPEEKVER NRTAMDQALQWLEDKFLGDR PFLAGQQVTLADLMALEELM QPVALGYELFEGRPRLAAWR GRVEAFLGAELCQEAHSIIL SILEQAAKKTLPTPSPEAYQ AMLLRIARIP
Specificity	Recombinant fusion protein containing a sequence corresponding to amino acids 115-244 of human GSTT2B (NP_001074312.1).

### ADDITIONAL INFORMATION

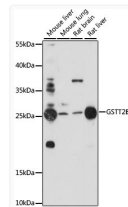
Note **STRICTLY FOR FURTHER SCIENTIFIC RESEARCH USE ONLY (RUO). MUST NOT TO BE USED IN DIAGNOSTIC OR THERAPEUTIC APPLICATIONS.**



Immunofluorescence analysis of NIH/3T3 cells using GSTT2B Rabbit polyclonal antibody (STJ117778) at dilution of 1:100. Secondary antibody: Cy3 Goat Anti-Rabbit IgG (H+L) at 1:500 dilution. Blue: DAPI for nuclear staining.



Immunofluorescence analysis of HeLa cells using GSTT2B Rabbit polyclonal antibody (STJ117778) at dilution of 1:100. Secondary antibody: Cy3 Goat Anti-Rabbit IgG (H+L) at 1:500 dilution. Blue: DAPI for nuclear staining.



Western blot analysis of various lysates using GSTT2B Rabbit polyclonal antibody (STJ117778) at 1:1000 dilution. Secondary antibody: HRP Goat Anti-Rabbit IgG (H+L) (STJS000856) at 1:10000 dilution. Lysates/proteins: 25 Mu g per lane. Blocking buffer: 3% nonfat dry milk in TBST. Detection: ECL Basic Kit. Exposure time: 120s.