

Anti-CDY1B antibody (60-320) (STJ117772)

GENERAL INFORMATION

Product Type	Primary antibodies
Applications	WB/ELISA
Host / Source	Rabbit
Reactivity	Mouse/Rat

PRODUCT PROPERTIES

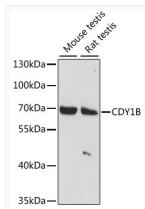
Clonality	Polyclonal
Concentration	Lot specific
Conjugation	Unconjugated
Purification	Affinity purification
Dilution Range	WB:1:200-1:2000 ELISA:Recommended starting concentration is 1 Mu g/mL. Please optimize the concentration based on your specific assay requirements.
Formulation	PBS with 0.01% Thimerosal, 50% Glycerol, pH 7.3.
Isotype	IgG
Molecular Weight	Protein Mw: 60kDa Observed Mw: 60kDa
Storage Instruction	Store at-20°C for up to 1 year from the date of receipt, and avoid repeat freeze-thaw cycles.

TARGET INFORMATION

Gene ID	253175/9085
Gene Symbol	CDY1.CDY1B
UniProt ID	CDY1_HUMAN
Immunogen Region	60-320
Immunogen Sequence	EKQKKLTTWTTTSRIFSNAR RRTSRSTKANYSKNSPKTPV TDKHHRSKNRKLF AASKNVR RKAASILSDTKNMEIINSTI ETLAPDSPFDHKT VSGFQKL EKLDPIAADQQDTVVFKVTE GKLLRDPLSRPGA EQTGIQN KTIQHPLMSQMSGSVT ASMA TGSATRKGI VVLIDPLAANG TTDMHTSVPRVKGGRNITD DSRDQPFIKMMHFTIRLTES ASTYRDIVVKKEDGFTQIV
Specificity	Recombinant fusion protein containing a sequence corresponding to amino acids 60-320 of human CDY1B (NP_001003895.1).

ADDITIONAL INFORMATION

Note **STRICTLY FOR FURTHER SCIENTIFIC RESEARCH USE ONLY (RUO). MUST NOT TO BE USED IN DIAGNOSTIC OR THERAPEUTIC APPLICATIONS.**



Western blot analysis of various lysates using CDY1B Rabbit polyclonal antibody (STJ117772) at 1:1000 dilution. Secondary antibody: HRP Goat Anti-Rabbit IgG (H+L) (STJS000856) at 1:10000 dilution. Lysates/proteins: 25 Mu g per lane. Blocking buffer: 3% nonfat dry milk in TBST. Detection: ECL Basic Kit. Exposure time: 30s.