

Anti-TRAPPC6B antibody (1-130) (STJ117756)

GENERAL INFORMATION

Product Type	Primary antibodies
Applications	WB/IHC-P/ELISA
Host / Source	Rabbit
Reactivity	Mouse/Rat

PRODUCT PROPERTIES

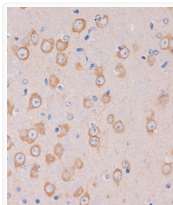
Clonality	Polyclonal
Concentration	Lot specific
Conjugation	Unconjugated
Purification	Affinity purification
Dilution Range	WB:1:200-1:2000 IHC-P:1:50-1:200 ELISA:Recommended starting concentration is 1 μ g/mL. Please optimize the concentration based on your specific assay requirements.
Formulation	PBS with 0.01% Thimerosal, 50% Glycerol, pH 7.3.
Isotype	IgG
Molecular Weight	Protein Mw: 18kDa Observed Mw: 18kDa
Storage Instruction	Store at -20°C for up to 1 year from the date of receipt, and avoid repeat freeze-thaw cycles.

TARGET INFORMATION

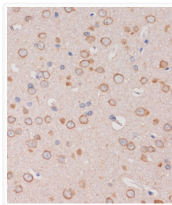
Gene ID	122553
Gene Symbol	TRAPPC6B
UniProt ID	TPC6B_HUMAN
Immunogen Region	1-130
Immunogen Sequence	MADEALFLLLNHEMVSQVYK SAEQGEVENGRCITKLENMG FRVGGQLIERFTKDTARFKD ELDIMKFICKDFWTTVFVKKQ IDNLRTNHQYLAFTCGLIRG GLSNLGIKSIIVTAEVSSMPA CKFQVMIQKL
Specificity	Recombinant fusion protein containing a sequence corresponding to amino acids 1-130 of human TRAPPC6B (NP_803235.1).

ADDITIONAL INFORMATION

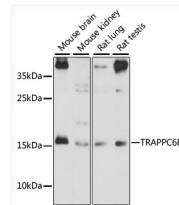
Note STRICTLY FOR FURTHER SCIENTIFIC RESEARCH USE ONLY (RUO). MUST NOT TO BE USED IN DIAGNOSTIC OR THERAPEUTIC APPLICATIONS.



Immunohistochemistry analysis of TRAPPC6B in paraffin-embedded mouse brain using TRAPPC6B Rabbit polyclonal antibody (STJ117756) at dilution of 1:100 (40x lens). Perform microwave antigen retrieval with 10 mM PBS buffer pH 7.2 before commencing with immunohistochemistry staining protocol.



Immunohistochemistry analysis of TRAPPC6B in paraffin-embedded rat brain using TRAPPC6B Rabbit polyclonal antibody (STJ117756) at dilution of 1:100 (40x lens). Perform microwave antigen retrieval with 10 mM PBS buffer pH 7.2 before commencing with immunohistochemistry staining protocol.



Western blot analysis of various lysates using TRAPPC6B Rabbit polyclonal antibody (STJ117756) at 1:1000 dilution. Secondary antibody: HRP Goat Anti-Rabbit IgG (H+L) (STJS000856) at 1:10000 dilution. Lysates/proteins: 25 μ g per lane. Blocking buffer: 3% nonfat dry milk in TBST. Detection: ECL Basic Kit. Exposure time: 90s.