

## Anti-MAF1 antibody (1-256) (STJ117726)

### GENERAL INFORMATION

Product Type	Primary antibodies
Applications	WB/ELISA
Host / Source	Rabbit
Reactivity	Human/Mouse

### PRODUCT PROPERTIES

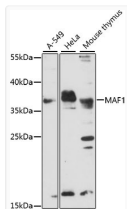
Clonality	Polyclonal
Concentration	Lot specific
Conjugation	Unconjugated
Purification	Affinity purification
Dilution Range	WB:1:200-1:2000 ELISA:Recommended starting concentration is 1 µg/mL. Please optimize the concentration based on your specific assay requirements.
Formulation	PBS with 0.01% Thimerosal, 50% Glycerol, pH 7.3.
Isotype	IgG
Molecular Weight	Protein Mw: 29kDa Observed Mw: 37kDa
Storage Instruction	Store at -20°C for up to 1 year from the date of receipt, and avoid repeat freeze-thaw cycles.

### TARGET INFORMATION

Gene ID	<a href="#">84232</a>
Gene Symbol	<a href="#">MAF1</a>
UniProt ID	<a href="#">MAF1_HUMAN</a>
Immunogen Region	1-256
Immunogen Sequence	MKLLSENSFEAINSQTLVET GDAHIIGRIESYSCKMAGDD KHMFKQFCQEGQPHVLEALS PPQTSGLSRSLKSKSQGGEE EGPLSDKCSRKTLFYLIATL NESFRPDYDFSTARSHFSR EPSLSWVYNAVNCSLFSAVR EDFKDLKPQLWNAVDEEICL AECDIYSYNPDLDSDPFGED GSLWSFNYYFFYNKRLKRIVF FSCRSISGTYTPSEAGNEL DMELGEEEEVEEESRSGGSG
Specificity	Recombinant fusion protein containing a sequence corresponding to amino acids 1-256 of human MAF1 (NP_115648.2).

### ADDITIONAL INFORMATION

Note **STRICTLY FOR FURTHER SCIENTIFIC RESEARCH USE ONLY (RUO). MUST NOT TO BE USED IN DIAGNOSTIC OR THERAPEUTIC APPLICATIONS.**



Western blot analysis of various lysates using MAF1 Rabbit polyclonal antibody (STJ117726) at 1:1000 dilution. Secondary antibody: HRP Goat Anti-Rabbit IgG (H+L) (STJS000856) at 1:10000 dilution. Lysates/proteins: 25 µg per lane. Blocking buffer: 3% nonfat dry milk in TBST. Detection: ECL Basic Kit. Exposure time: 10s.