

## Anti-WNK3 antibody (500-600) (STJ117702)

### GENERAL INFORMATION

Product Type	Primary antibodies
Applications	WB/IF/ICC/ELISA
Host / Source	Rabbit
Reactivity	Human/Mouse/Rat

### PRODUCT PROPERTIES

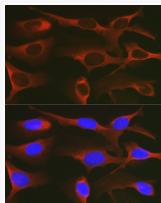
Clonality	Polyclonal
Concentration	Lot specific
Conjugation	Unconjugated
Purification	Affinity purification
Dilution Range	WB:1:100-1:500 IF/CC:1:50-1:200 ELISA:Recommended starting concentration is 1 Mu g/mL. Please optimize the concentration based on your specific assay requirements.
Formulation	PBS with 0.02% Sodium Azide, 50% Glycerol, pH 7.3.
Isotype	IgG
Molecular Weight	Protein Mw: 198kDa Observed Mw: 180kDa
Storage Instruction	Store at -20°C for up to 1 year from the date of receipt, and avoid repeat freeze-thaw cycles.

### TARGET INFORMATION

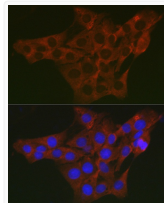
Gene ID	<a href="#">65267</a>
Gene Symbol	<a href="#">WNK3</a>
UniProt ID	<a href="#">WNK3_HUMAN</a>
Immunogen Region	500-600
Immunogen Sequence	AGCLEERRDSQCKSMGNVFP QPQNTTLPLAPAQQTGAECE ETEVDQHVRRQLLQRKPQQH CSSVTGDNLSEAGAASVIHS DTSSQPSVAYSSNQTMGSQM V
Specificity	Recombinant fusion protein containing a sequence corresponding to amino acids 500-600 of human WNK3 (NP_065973.2).

### ADDITIONAL INFORMATION

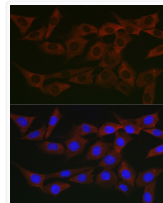
Note STRICTLY FOR FURTHER SCIENTIFIC RESEARCH USE ONLY (RUO). MUST NOT TO BE USED IN DIAGNOSTIC OR THERAPEUTIC APPLICATIONS.



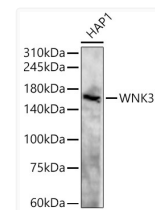
Immunofluorescence analysis of U2OS cells using WNK3 Rabbit polyclonal antibody (STJ117702) at dilution of 1:200 (40x lens). Blue: DAPI for nuclear staining.



Immunofluorescence analysis of PC-12 cells using WNK3 Rabbit polyclonal antibody (STJ117702) at dilution of 1:200 (40x lens). Blue: DAPI for nuclear staining.



Immunofluorescence analysis of NIH/3T3 cells using WNK3 Rabbit polyclonal antibody (STJ117702) at dilution of 1:200 (40x lens). Blue: DAPI for nuclear staining.



Western blot analysis of HAP1, using WNK3 antibody (STJ117702) at 1:500 dilution. Secondary antibody: HRP Goat Anti-Rabbit IgG (H+L) (STJS000856) at 1:10000 dilution. Lysates/proteins: 25 Mu g per lane. Blocking buffer: 3% nonfat dry milk in TBST. Detection: ECL Basic Kit. Exposure time: 90s.