

Anti-ANAPC11 antibody (1-84) (STJ117644)

GENERAL INFORMATION

Product Type	Primary antibodies
Applications	WB/IHC-P/IF/ICC/ELISA
Host / Source	Rabbit
Reactivity	Human/Mouse

PRODUCT PROPERTIES

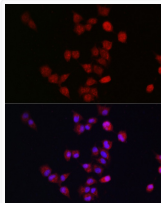
Clonality	Polyclonal
Concentration	Lot specific
Conjugation	Unconjugated
Purification	Affinity purification
Dilution Range	WB:1:200-1:2000 IHC-P:1:50-1:200 IF/CC:1:50-1:200 ELISA:Recommended starting concentration is 1 μ g/mL. Please optimize the concentration based on your specific assay requirements.
Formulation	PBS with 0.01% Thimerosal, 50% Glycerol, pH 7.3.
Isotype	IgG
Molecular Weight	Protein Mw: 10kDa Observed Mw: 12kDa
Storage Instruction	Store at -20°C for up to 1 year from the date of receipt, and avoid repeat freeze-thaw cycles.

TARGET INFORMATION

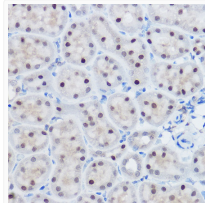
Gene ID	51529
Gene Symbol	ANAPC11
UniProt ID	APC11_HUMAN
Immunogen Region	1-84
Immunogen Sequence	MKVKIKCWNGVATWLWVAND ENCGICRMAFNGCCPDCKVP GDDCPLVWGQCSCSHCFMHCI LKWLHAQQVQQHCPMCRQEW KFKE
Specificity	Recombinant fusion protein containing a sequence corresponding to amino acids 1-84 of human ANAPC11 (NP_001002245.1).

ADDITIONAL INFORMATION

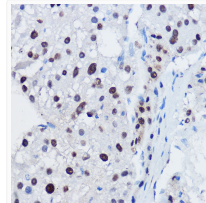
Note **STRICTLY FOR FURTHER SCIENTIFIC RESEARCH USE ONLY (RUO). MUST NOT TO BE USED IN DIAGNOSTIC OR THERAPEUTIC APPLICATIONS.**



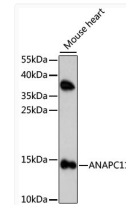
Immunofluorescence analysis of A-549 cells using ANAPC11 Rabbit polyclonal antibody (STJ117644) at dilution of 1:300. Secondary antibody: Cy3 Goat Anti-Rabbit IgG (H+L) at 1:500 dilution. Blue: DAPI for nuclear staining.



Immunohistochemistry analysis of ANAPC11 in paraffin-embedded mouse kidney using ANAPC11 Rabbit polyclonal antibody (STJ117644) at dilution of 1:100 (40x lens). Perform high pressure antigen retrieval with 10 mM citrate buffer pH 6.0 before commencing with immunohistochemistry staining protocol.



Immunohistochemistry analysis of ANAPC11 in paraffin-embedded human liver cancer using ANAPC11 Rabbit polyclonal antibody (STJ117644) at dilution of 1:100 (40x lens). Perform high pressure antigen retrieval with 10 mM citrate buffer pH 6.0 before commencing with immunohistochemistry staining protocol.



Western blot analysis of lysates from mouse heart, using ANAPC11 Rabbit polyclonal antibody (STJ117644) at 1:1000 dilution. Secondary antibody: HRP Goat Anti-Rabbit IgG (H+L) (STJS000856) at 1:10000 dilution. Lysates/proteins: 25 μ g per lane. Blocking buffer: 3% nonfat dry milk in TBST. Detection: ECL Enhanced Kit. Exposure time: 120s.