

Anti-EDC4 antibody (800-1100) (STJ117613)

GENERAL INFORMATION

Product Type	Primary antibodies
Applications	WB/ELISA
Host / Source	Rabbit
Reactivity	Human/Mouse

PRODUCT PROPERTIES

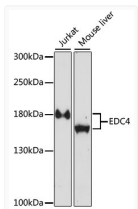
Clonality	Polyclonal
Concentration	Lot specific
Conjugation	Unconjugated
Purification	Affinity purification
Dilution Range	WB:1:200-1:2000 ELISA:Recommended starting concentration is 1 Mu g/mL. Please optimize the concentration based on your specific assay requirements.
Formulation	PBS with 0.01% Thimerosal, 50% Glycerol, pH 7.3.
Isotype	IgG
Molecular Weight	Protein Mw: 152kDa Observed Mw: 160-180kDa
Storage Instruction	Store at-20°C for up to 1 year from the date of receipt, and avoid repeat freeze-thaw cycles.

TARGET INFORMATION

Gene ID	23644
Gene Symbol	EDC4
UniProt ID	EDC4_HUMAN
Immunogen Region	800-1100
Immunogen Sequence	GDGDRHNTPSLLEAALTQEA STPDSQVWPTAPDITRETCS TLAESPRNGLQEKKHSLAFH RPPYHLLQQRDSQDASAEQS DHDDEVASLASASGGFGTKV PAPRLPAKDWKTKGSPRTSP KLKPKSKKDDGDAAMGSRLLT EHQVAEPPEDWPALIWQQQR ELAELRHSQEELLQRLCTQL EGLQSTVTGHVERALETRHE QEQRRLERALEGQQRRGGQL QEQLTQQLSQALSSAVAGR
Specificity	Recombinant fusion protein containing a sequence corresponding to amino acids 800-1100 of human EDC4 (NP_055144.3).

ADDITIONAL INFORMATION

Note **STRICTLY FOR FURTHER SCIENTIFIC RESEARCH USE ONLY (RUO). MUST NOT TO BE USED IN DIAGNOSTIC OR THERAPEUTIC APPLICATIONS.**



Western blot analysis of various lysates using EDC4 Rabbit polyclonal antibody (STJ117613) at 1:1000 dilution. Secondary antibody: HRP Goat Anti-Rabbit IgG (H+L) (STJS000856) at 1:10000 dilution. Lysates/proteins: 25 Mu g per lane. Blocking buffer: 3% nonfat dry milk in TBST. Detection: ECL Enhanced Kit. Exposure time: 30s.