

## Anti-CPEB3 antibody (150-400) (STJ117597)

### GENERAL INFORMATION

Product Type	Primary antibodies
Applications	WB/IHC-P/IF/ICC/ELISA
Host / Source	Rabbit
Reactivity	Human/Mouse/Rat

### PRODUCT PROPERTIES

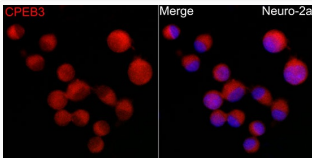
Clonality	Polyclonal
Concentration	Lot specific
Conjugation	Unconjugated
Purification	Affinity purification
Dilution Range	WB:1:200-1:2000 IHC-P:1:100-1:500 IF/ICC:1:50-1:200 ELISA:Recommended starting concentration is 1 Mu g/mL. Please optimize the concentration based on your specific assay requirements.
Formulation	PBS with 0.05% Proclin300, 50% Glycerol, pH 7.3.
Isotype	IgG
Molecular Weight	Protein Mw: 76kDa Observed Mw: 75kDa/
Storage Instruction	Store at -20°C for up to 1 year from the date of receipt, and avoid repeat freeze-thaw cycles.

### TARGET INFORMATION

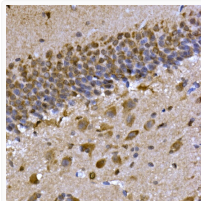
Gene ID	<a href="#">22849</a>
Gene Symbol	<a href="#">CPEB3</a>
UniProt ID	<a href="#">CPEB3_HUMAN</a>
Immunogen Region	150-400
Immunogen Sequence	TFSPQIGLAQTQHHQQPPPP APAPQPAQPAQPPQAQPPQQ RRSPPASPSQAPYAQRSAAAA YGHQPIMTSKPSSSSAVAAA AAAAAASSASSWNTHQSVN AAWSAPSNPWGGLQAGRDP RAVGVGVGVGVPSPLNPI SPLKPFSSNVIAPPKFPRA APLTSKSWMEDNAFRDNGN NLLPFQDRSRPYDTFNLHSL ENSLMDMIRTDHEPLKGGHY PPSGPPMSFADIMWRNHFA
Specificity	Recombinant fusion protein containing a sequence corresponding to amino acids 150-400 of human CPEB3 (NP_055727.3).

### ADDITIONAL INFORMATION

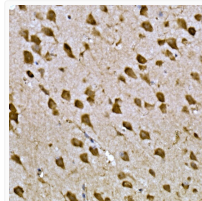
Note STRICTLY FOR FURTHER SCIENTIFIC RESEARCH USE ONLY (RUO). MUST NOT TO BE USED IN DIAGNOSTIC OR THERAPEUTIC APPLICATIONS.



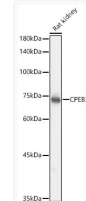
Immunofluorescence analysis of Neuro-2a cells using CPEB3 Rabbit polyclonal antibody (STJ117597) at dilution of 1:200 (40x lens). Secondary antibody: Cy3 Goat Anti-Rabbit IgG (H+L) at 1:500 dilution. Blue: DAPI for nuclear staining.



Immunohistochemistry analysis of CPEB3 in paraffin-embedded rat brain tissue using CPEB3 Rabbit polyclonal antibody (STJ117597) at a dilution of 1:300 (40x lens). High pressure antigen retrieval was performed with 0.01 M citrate buffer (pH 6.0) prior to immunohistochemistry staining.



Immunohistochemistry analysis of CPEB3 in paraffin-embedded mouse brain tissue using CPEB3 Rabbit polyclonal antibody (STJ117597) at a dilution of 1:300 (40x lens). High pressure antigen retrieval was performed with 0.01 M citrate buffer (pH 6.0) prior to immunohistochemistry staining.



Western blot analysis of lysates from Rat kidney using CPEB3 Rabbit polyclonal antibody (STJ117597) at 1:1000 dilution. Secondary antibody:HRP Goat Anti-Rabbit IgG (H+L) (STJS000856) at 1:10000 dilution. Lysates/proteins: 25 Mu g per lane. Blocking buffer: 3% nonfat dry milk in TBST. Detection:ECL Basic Kit. Exposuretime:1s.