

## Anti-AFG3L2 antibody (538-797) (STJ117588)

### GENERAL INFORMATION

Product Type	Primary antibodies
Applications	WB/IHC-P/IP/ELISA
Host / Source	Rabbit
Reactivity	Human/Mouse/Rat

### PRODUCT PROPERTIES

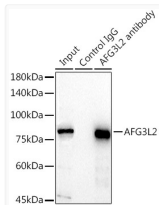
Clonality	Polyclonal
Concentration	Lot specific
Conjugation	Unconjugated
Purification	Affinity purification
Dilution Range	WB:1:500-1:1000 IHC-P:1:50-1:200 IP:0.5 Mu g-4 Mu g antibody for 200 Mu g-400 Mu g extracts of whole cells ELISA:Recommended starting concentration is 1 Mu g/mL. Please optimize the concentration based on your specific assay requirements.
Formulation	PBS with 0.05% Proclin300, 50% Glycerol, pH 7.3.
Isotype	IgG
Molecular Weight	Protein Mw: 89kDa Observed Mw: 80-90kDa
Storage Instruction	Store at -20°C for up to 1 year from the date of receipt, and avoid repeat freeze-thaw cycles.

### TARGET INFORMATION

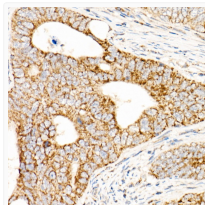
Gene ID	<a href="#">10939</a>
Gene Symbol	<a href="#">AFG3L2</a>
UniProt ID	<a href="#">AFG32_HUMAN</a>
Immunogen Region	538-797
Immunogen Sequence	DSINQKHFEQAIERVIGGLE KKTQVLQPEEKKTVAAYHEAG HAVAGWYLEHADPLLKVSII PRGKGLGYAQYLPKEQYLYT KEQLDRMCMTLGGRVSEEI FFGRIITGAQDDLKRVTQSA YAIQVQFGMNEKVGQISFDL PRQGDVLEKPYSEATARLI DDEVRLINDAYKRTVALLT EKKADVEKVALLLLEKEVLD KNMDVELLGRPFPAEKSTYE EFVEGTGSLDEDTSLPEGL
Specificity	Recombinant fusion protein containing a sequence corresponding to amino acids 538-797 of human AFG3L2 (NP_006787.2).

### ADDITIONAL INFORMATION

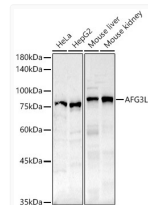
Note **STRICTLY FOR FURTHER SCIENTIFIC RESEARCH USE ONLY (RUO). MUST NOT TO BE USED IN DIAGNOSTIC OR THERAPEUTIC APPLICATIONS.**



Immunoprecipitation analysis of 300 Mu g extracts of HeLa cells using 3 Mu g AFG3L2 antibody (STJ117588). Western blot was performed from the immunoprecipitate using AFG3L2 antibody (STJ117588) at a dilution of 1:1000.



Immunohistochemistry analysis of AFG3L2 in paraffin-embedded human colon carcinoma using AFG3L2 Rabbit polyclonal antibody (STJ117588) at dilution of 1:50 (40x lens). Perform high pressure antigen retrieval with 10 mM citrate buffer pH 6.0 before commencing with immunohistochemistry staining protocol.



Western blot analysis of various lysates, using AFG3L2 Rabbit polyclonal antibody (STJ117588) at 1:500 dilution. Secondary antibody: HRP Goat Anti-Rabbit IgG (H+L) (STJS000856) at 1:10000 dilution. Lysates/proteins: 25 Mu g per lane. Blocking buffer: 3% nonfat dry milk in TBST. Detection: ECL Basic Kit. Exposure time: 30s.