

Anti-ADAMTS1 antibody (718-967) (STJ117551)

GENERAL INFORMATION

Product Type	Primary antibodies
Applications	WB/IF/ICC/ELISA
Host / Source	Rabbit
Reactivity	Human/Mouse/Rat

PRODUCT PROPERTIES

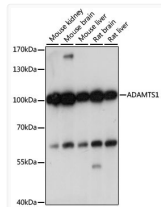
Clonality	Polyclonal
Concentration	Lot specific
Conjugation	Unconjugated
Purification	Affinity purification
Dilution Range	WB:1:500-1:2000 IF/CC:1:50-1:200 ELISA:Recommended starting concentration is 1 μ g/mL. Please optimize the concentration based on your specific assay requirements.
Formulation	PBS with 0.05% Proclin300, 50% Glycerol, pH 7.3.
Isotype	IgG
Molecular Weight	Protein Mw: 105kDa Observed Mw: 105kDa
Storage Instruction	Store at -20°C for up to 1 year from the date of receipt, and avoid repeat freeze-thaw cycles.

TARGET INFORMATION

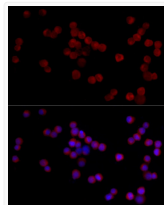
Gene ID	9510
Gene Symbol	ADAMTS1
UniProt ID	ATS1_HUMAN
Immunogen Region	718-967
Immunogen Sequence	GGNGSTCKKISGSVTSAPKG YHDIITPTGATNIEVKQRN QRGSRNNGSFLAIKAADGTY ILNGDYTLSTLEQDIMYKGV VLRYSGSSAALERIRSFSP L KEPLTIQVLTVGNALRPKIK YTYFVKKKESFNAIPTFSA WVIEEWGECSSKSELGWQRR LVECRDINGQPASECAKEVK PASTRPCADHPCPQWQLGEW SSCSKTCGKGYKKRSLKCLS HDGGVLSHESCDPLKPKPH
Specificity	Recombinant fusion protein containing a sequence corresponding to amino acids 718-967 of human ADAMTS1 (NP_008919.3).

ADDITIONAL INFORMATION

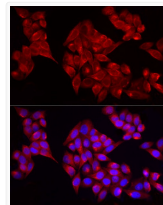
Note STRICTLY FOR FURTHER SCIENTIFIC RESEARCH USE ONLY (RUO). MUST NOT TO BE USED IN DIAGNOSTIC OR THERAPEUTIC APPLICATIONS.



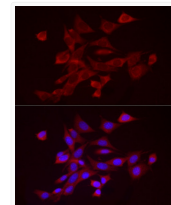
Western blot analysis of extracts of various cell lines, using ADAMTS1 antibody (STJ117551) at 1:1000 dilution. Secondary antibody: HRP Goat Anti-rabbit IgG (H+L) (STJS000856) at 1:10000 dilution. Lysates/proteins: 25 μ g per lane. Blocking buffer: 3% non-fat dry milk in TBST. Detection: ECL Basic Kit. Exposure time: 1s.



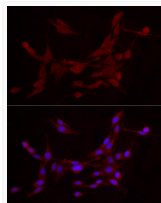
Immunofluorescence analysis of 293F cells using ADAMTS1 rabbit polyclonal antibody (STJ117551) at dilution of 1:20 (40x lens). Blue: DAPI for nuclear staining.



Immunofluorescence analysis of HeLa cells using ADAMTS1 rabbit polyclonal antibody (STJ117551) at dilution of 1:20 (40x lens). Blue: DAPI for nuclear staining.



Immunofluorescence analysis of NIH/3T3 cells using ADAMTS1 rabbit polyclonal antibody (STJ117551) at dilution of 1:20 (40x lens). Blue: DAPI for nuclear staining.



Immunofluorescence analysis of PC-12 cells using ADAMTS1 rabbit polyclonal antibody (STJ117551) at dilution of 1:20 (40x lens). Blue: DAPI for nuclear staining.