

Anti-MTMR4 antibody (920-1195) (STJ117544)

GENERAL INFORMATION

Product Type	Primary antibodies
Applications	WB/IF/ICC/ELISA
Host / Source	Rabbit
Reactivity	Human/Mouse/Rat

PRODUCT PROPERTIES

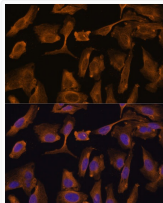
Clonality	Polyclonal
Concentration	Lot specific
Conjugation	Unconjugated
Purification	Affinity purification
Dilution Range	WB:1:200-1:2000 IF/CC:1:50-1:200 ELISA:Recommended starting concentration is 1 μ g/mL. Please optimize the concentration based on your specific assay requirements.
Formulation	PBS with 0.01% Thimerosal, 50% Glycerol, pH 7.3.
Isotype	IgG
Molecular Weight	Protein Mw: 133kDa Observed Mw: 133kDa
Storage Instruction	Store at -20°C for up to 1 year from the date of receipt, and avoid repeat freeze-thaw cycles.

TARGET INFORMATION

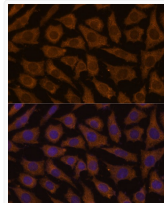
Gene ID	9110
Gene Symbol	MTMR4
UniProt ID	MTMR4_HUMAN
Immunogen Region	920-1195
Immunogen Sequence	GEATPRRLLSYGCCSKRPNS KQMRATGPCFGGQWAQREGV KSPVCSHSHNGHCTGPGGKN QMWLSSHPKQVSSTKPVPLN CPSPVPPLYLDDGLPFPD VIQHRLRQIEAGYKQVEVQL RRQVRELQMRDIRHCCAPP AEPMDYEDDFTCLKESDGS DTEDFGSDHSEDCLSEASWE PVDKKEVTRWVPDHMASH CYNCDCEFWLAKRRHRCRNC GNVFCAGCCCHLKLPIPDQQ
Specificity	Recombinant fusion protein containing a sequence corresponding to amino acids 920-1195 of human MTMR4 (NP_004678.3).

ADDITIONAL INFORMATION

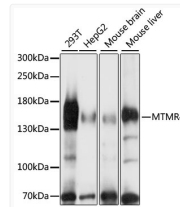
Note STRICTLY FOR FURTHER SCIENTIFIC RESEARCH USE ONLY (RUO). MUST NOT TO BE USED IN DIAGNOSTIC OR THERAPEUTIC APPLICATIONS.



Immunofluorescence analysis of U-2 OS cells using MTMR4 Rabbit polyclonal antibody (STJ117544) at dilution of 1:100 (40x lens). Secondary antibody: Cy3 Goat Anti-Rabbit IgG (H+L) at 1:500 dilution. Blue: DAPI for nuclear staining.



Immunofluorescence analysis of L929 cells using MTMR4 Rabbit polyclonal antibody (STJ117544) at dilution of 1:100 (40x lens). Secondary antibody: Cy3 Goat Anti-Rabbit IgG (H+L) at 1:500 dilution. Blue: DAPI for nuclear staining.



Western blot analysis of various lysates using MTMR4 Rabbit polyclonal antibody (STJ117544) at 1:1000 dilution. Secondary antibody: HRP Goat Anti-Rabbit IgG (H+L) (STJS000856) at 1:10000 dilution. Lysates/proteins: 25 μ g per lane. Blocking buffer: 3% nonfat dry milk in TBST. Detection: ECL Basic Kit. Exposure time: 60s.