

Anti-SUCLG1 antibody (41-346) (STJ117540)

GENERAL INFORMATION

Product Type	Primary antibodies
Applications	WB/IF/ICC/ELISA
Host / Source	Rabbit
Reactivity	Human/Mouse/Rat

PRODUCT PROPERTIES

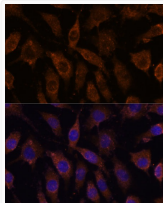
Clonality	Polyclonal
Concentration	Lot specific
Conjugation	Unconjugated
Purification	Affinity purification
Dilution Range	WB:1:200-1:2000 IF/CC:1:50-1:200 ELISA:Recommended starting concentration is 1 μ g/mL. Please optimize the concentration based on your specific assay requirements.
Formulation	PBS with 0.01% Thimerosal, 50% Glycerol, pH 7.3.
Isotype	IgG
Molecular Weight	Protein Mw: 36kDa Observed Mw: 26-36kDa
Storage Instruction	Store at -20°C for up to 1 year from the date of receipt, and avoid repeat freeze-thaw cycles.

TARGET INFORMATION

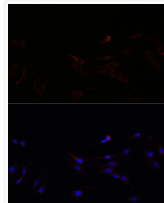
Gene ID	8802
Gene Symbol	SUCLG1
UniProt ID	SUCA_HUMAN
Immunogen Region	41-346
Immunogen Sequence	CSYTASRQHLYVDKNTKIIC QGFTGKQGFHSSQQALEYGT KLVGGTTPGKGGQTHLGLPV FNTVKEAKEQTGATASVIYV PPPFAAAAINEAIEAIEPLV VCITEGIPQQDMVRVKHKLL RQEKTRLIGPNCPGVINPGE CKIGIMPGHIIHKKGRIGIVS RSGTLTYEAVHQTTQVGLGQ SLCVGIGGDPFNGTDFIDCL EIFLNDTSATEGIIIGEIGG NAEENAAEFLKQHNSGPNS
Specificity	Recombinant fusion protein containing a sequence corresponding to amino acids 41-346 of human SUCLG1 (NP_003840.2).

ADDITIONAL INFORMATION

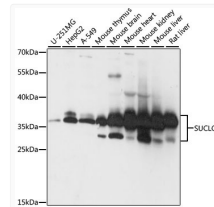
Note STRICTLY FOR FURTHER SCIENTIFIC RESEARCH USE ONLY (RUO). MUST NOT TO BE USED IN DIAGNOSTIC OR THERAPEUTIC APPLICATIONS.



Immunofluorescence analysis of L929 cells using SUCLG1 Rabbit polyclonal antibody (STJ117540) at dilution of 1:100. Secondary antibody: Cy3 Goat Anti-Rabbit IgG (H+L) at 1:500 dilution. Blue: DAPI for nuclear staining.



Immunofluorescence analysis of C6 cells using SUCLG1 Rabbit polyclonal antibody (STJ117540) at dilution of 1:100. Secondary antibody: Cy3 Goat Anti-Rabbit IgG (H+L) at 1:500 dilution. Blue: DAPI for nuclear staining.



Western blot analysis of various lysates using SUCLG1 Rabbit polyclonal antibody (STJ117540) at 1:1000 dilution. Secondary antibody: HRP Goat Anti-Rabbit IgG (H+L) (STJS000856) at 1:10000 dilution. Lysates/proteins: 25 μ g per lane. Blocking buffer: 3% nonfat dry milk in TBST. Detection: ECL Basic Kit. Exposure time: 5s.