

Anti-PSMD11 antibody (253-422) (STJ117501)

GENERAL INFORMATION

Product Type	Primary antibodies
Applications	WB/IF/ICC/ELISA
Host / Source	Rabbit
Reactivity	Human/Mouse/Rat

PRODUCT PROPERTIES

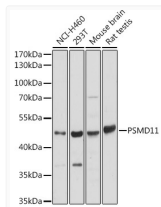
Clonality	Polyclonal
Concentration	Lot specific
Conjugation	Unconjugated
Purification	Affinity purification
Dilution Range	WB:1:1000-1:5000 IF/CC:1:50-1:200 ELISA:Recommended starting concentration is 1 μ g/mL. Please optimize the concentration based on your specific assay requirements.
Formulation	PBS with 0.05% Proclin300, 50% Glycerol, pH 7.3.
Isotype	IgG
Molecular Weight	Protein Mw: 47kDa Observed Mw: 47kDa
Storage Instruction	Store at -20°C for up to 1 year from the date of receipt, and avoid repeat freeze-thaw cycles.

TARGET INFORMATION

Gene ID	5717
Gene Symbol	PSMD11
UniProt ID	PSD11_HUMAN
Immunogen Region	253-422
Immunogen Sequence	YMLLCKIMLNTPEDVQALVS GKLALRYAGRQTEALKCVAQ ASKNRSLADFEKALTDYRAE LRDDPIISTHLAKLYDNLLE QNLIRVIEPFSRVQIEHISS LIKLSKADVERKLSQMILDK KFHGILDQGGVLIIFDEPP VDKTYEAALETIQNMSKVVD SLYNKAKKLT
Specificity	Recombinant fusion protein containing a sequence corresponding to amino acids 253-422 of human PSMD11 (NP_002806.2).

ADDITIONAL INFORMATION

Note STRICTLY FOR FURTHER SCIENTIFIC RESEARCH USE ONLY (RUO). MUST NOT TO BE USED IN DIAGNOSTIC OR THERAPEUTIC APPLICATIONS.



Western blot analysis of extracts of various cell lines, using PSMD11 antibody (STJ117501) at 1:2000 dilution. Secondary antibody: HRP Goat Anti-Rabbit IgG (H+L) (STJS000856) at 1:10000 dilution. Lysates/proteins: 25 μ g per lane. Blocking buffer: 3% nonfat dry milk in TBST. Detection: ECL Basic Kit. Exposure time: 5s.