

Anti-MYH4 antibody (1500-1600) (STJ117488)

GENERAL INFORMATION

Product Type	Primary antibodies
Applications	WB/IHC-P/IF/ICC/ELISA
Host / Source	Rabbit
Reactivity	Human/Mouse/Rat

PRODUCT PROPERTIES

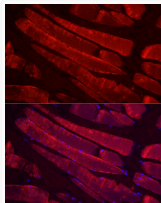
Clonality	Polyclonal
Concentration	Lot specific
Conjugation	Unconjugated
Purification	Affinity purification
Dilution Range	WB:1:100-1:500 IHC-P:1:50-1:200 IF/CC:1:50-1:200 ELISA:Recommended starting concentration is 1 Mu g/mL. Please optimize the concentration based on your specific assay requirements.
Formulation	PBS with 0.09% Sodium Azide, 50% Glycerol, pH7.3.
Isotype	IgG
Molecular Weight	Protein Mw: 223kDa Observed Mw: 250kDa
Storage Instruction	Store at -20°C for up to 1 year from the date of receipt, and avoid repeat freeze-thaw cycles.

TARGET INFORMATION

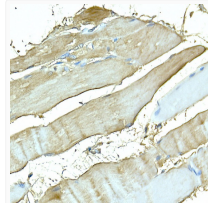
Gene ID	4622
Gene Symbol	MYH4
UniProt ID	MYH4_HUMAN
Immunogen Region	1500-1600
Immunogen Sequence	ETLKRENKLNQQEISDLTEQ IAEKGKHIHELEKVKKQLDH EKSELTQSLEEAASLEHEE GKILRIQLELNQVKSEIDRK IAEKDEELDQLKRNLRVVE S
Specificity	A synthetic peptide corresponding to a sequence within amino acids 1500-1600 of human MYH4 (NP_060003.2).

ADDITIONAL INFORMATION

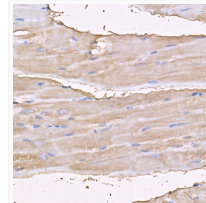
Note **STRICTLY FOR FURTHER SCIENTIFIC RESEARCH USE ONLY (RUO). MUST NOT TO BE USED IN DIAGNOSTIC OR THERAPEUTIC APPLICATIONS.**



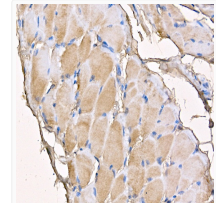
Immunofluorescence analysis of paraffin-embedded rat skeletal muscle using MYH4 Rabbit polyclonal antibody (STJ117488) at dilution of 1:100 (40x lens). Secondary antibody: Cy3 Goat Anti-Rabbit IgG (H+L) at 1:500 dilution. Blue: DAPI for nuclear staining.



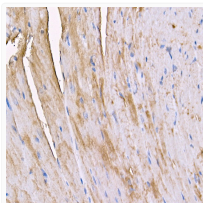
Immunohistochemistry analysis of MYH4 in paraffin-embedded rat skeletal muscle using MYH4 Rabbit polyclonal antibody (STJ117488) at dilution of 1:100 (40x lens). Perform high pressure antigen retrieval with 10 mM citrate buffer pH 6. 0 before commencing with immunohistochemistry staining protocol.



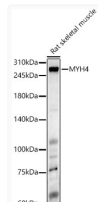
Immunohistochemistry analysis of MYH4 in paraffin-embedded rat heart using MYH4 Rabbit polyclonal antibody (STJ117488) at dilution of 1:100 (40x lens). Perform high pressure antigen retrieval with 10 mM citrate buffer pH 6. 0 before commencing with immunohistochemistry staining protocol.



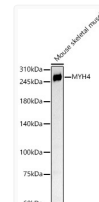
Immunohistochemistry analysis of MYH4 in paraffin-embedded mouse skeletal muscle using MYH4 Rabbit polyclonal antibody (STJ117488) at dilution of 1:100 (40x lens). Perform high pressure antigen retrieval with 10 mM citrate buffer pH 6. 0 before commencing with immunohistochemistry staining protocol.



Immunohistochemistry analysis of MYH4 in paraffin-embedded mouse heart using MYH4 Rabbit polyclonal antibody (STJ117488) at dilution of 1:100 (40x lens). Perform high pressure antigen retrieval with 10 mM citrate buffer pH 6. 0 before commencing with immunohistochemistry staining protocol.



Western blot analysis of various lysates, using MYH4 Rabbit polyclonal antibody (STJ117488) at 1:400 dilution. Secondary antibody: HRP Goat Anti-Rabbit IgG (H+L) (STJS000856) at 1:10000 dilution. Lysates/proteins: 25 Mu g per lane. Blocking buffer: 3% nonfat dry milk in TBST. Detection: ECL Enhanced Kit. Exposure time: 60s.



Western blot analysis of lysates from Mouse skeletal muscle, using MYH4 Rabbit polyclonal antibody (STJ117488) at 1:400 dilution. Secondary antibody: HRP Goat Anti-Rabbit IgG (H+L) (STJS000856) at 1:10000 dilution. Lysates/proteins: 25 Mu g per lane. Blocking buffer: 3% nonfat dry milk in TBST. Detection: ECL Basic Kit. Exposure time: 90s.