

## Anti-MYH2 antibody (621-635) (STJ117487)

### GENERAL INFORMATION

Product Type	Primary antibodies
Applications	WB/IF/ICC/ELISA
Host / Source	Rabbit
Reactivity	Human/Mouse/Rat

### PRODUCT PROPERTIES

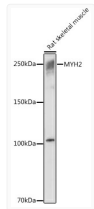
Clonality	Polyclonal
Concentration	Lot specific
Conjugation	Unconjugated
Purification	Affinity purification
Dilution Range	WB:1:500-1:1000 IF/CC:1:50-1:200 ELISA:Recommended starting concentration is 1 Mu g/mL. Please optimize the concentration based on your specific assay requirements.
Formulation	PBS with 0.05% Proclin300, 50% Glycerol, pH7.3.
Isotype	IgG
Molecular Weight	Protein Mw: 223kDa Observed Mw: 250kDa
Storage Instruction	Store at -20°C for up to 1 year from the date of receipt, and avoid repeat freeze-thaw cycles.

### TARGET INFORMATION

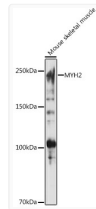
Gene ID	<a href="#">4620</a>
Gene Symbol	<a href="#">MYH2</a>
UniProt ID	<a href="#">MYH2_HUMAN</a>
Immunogen Region	621-635
Immunogen Sequence	NKDPLNETVVGLYQKSAMKT LAQLFSGAQTAELEGAGGGA KKGKKKKGSSSFQTVSALFRE NLNKLMTNLRSTHPHFVRCI IPNETKTPGAMEHELVLHQL RCNGVLEGRICRKGFP LYADFKQRYKVLNASAIPEG QFIDSKKASEKLLASIDIDH TQYKFGHTKVFFKAGLLGLL EEMRDDKLAQLITRTQARCR GFLARVEYQRMVERREAIFC IQYNIRSFMNVKHWPWMK
Specificity	A synthetic peptide corresponding to a sequence within amino acids 600-700 of human MYH2 (NP_001093582.1).

### ADDITIONAL INFORMATION

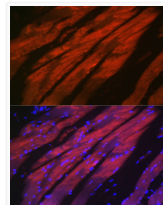
Note STRICTLY FOR FURTHER SCIENTIFIC RESEARCH USE ONLY (RUO). MUST NOT TO BE USED IN DIAGNOSTIC OR THERAPEUTIC APPLICATIONS.



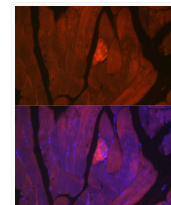
Western blot analysis of extracts of Rat skeletal muscle, using MYH2 antibody (STJ117487) at 1:1000 dilution. Secondary antibody: HRP Goat Anti-rabbit IgG (H+L) (STJS000856) at 1:10000 dilution. Lysates/proteins: 25 Mu g per lane. Blocking buffer: 3% non-fat dry milk in TBST. Detection: ECL Basic Kit. Exposure time: 1s.



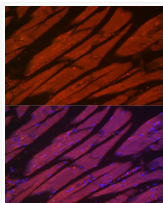
Western blot analysis of extracts of mouse skeletal muscle, using MYH2 antibody (STJ117487) at 1:1000 dilution. Secondary antibody: HRP Goat Anti-rabbit IgG (H+L) (STJS000856) at 1:10000 dilution. Lysates/proteins: 25 Mu g per lane. Blocking buffer: 3% non-fat dry milk in TBST. Detection: ECL Basic Kit. Exposure time: 10s.



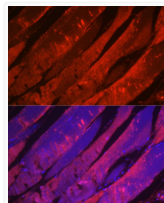
Immunofluorescence analysis of mouse skeletal muscle cells using MYH2 rabbit polyclonal antibody (STJ117487) at dilution of 1:50 (40x lens). Blue: DAPI for nuclear staining.



Immunofluorescence analysis of rat skeletal muscle cells using MYH2 rabbit polyclonal antibody (STJ117487) at dilution of 1:50 (40x lens). Blue: DAPI for nuclear staining.



Immunofluorescence analysis of mouse skeletal muscle cells using MYH2 rabbit polyclonal antibody (STJ117487) at dilution of 1:100 (40x lens). Blue: DAPI for nuclear staining.



Immunofluorescence analysis of rat skeletal muscle cells using MYH2 rabbit polyclonal antibody (STJ117487) at dilution of 1:100 (40x lens). Blue: DAPI for nuclear staining.