

## Anti-KIF22 antibody (456-665) (STJ117480)

### GENERAL INFORMATION

Product Type	Primary antibodies
Applications	WB/IHC-P/ELISA
Host / Source	Rabbit
Reactivity	Human/Mouse

### PRODUCT PROPERTIES

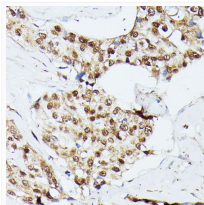
Clonality	Polyclonal
Concentration	Lot specific
Conjugation	Unconjugated
Purification	Affinity purification
Dilution Range	WB:1:200-1:2000 IHC-P:1:50-1:200 ELISA:Recommended starting concentration is 1 µg/mL. Please optimize the concentration based on your specific assay requirements.
Formulation	PBS with 0.09% Sodium Azide, 50% Glycerol, pH7.3.
Isotype	IgG
Molecular Weight	Protein Mw: 73kDa Observed Mw: 73kDa
Storage Instruction	Store at -20°C for up to 1 year from the date of receipt, and avoid repeat freeze-thaw cycles.

### TARGET INFORMATION

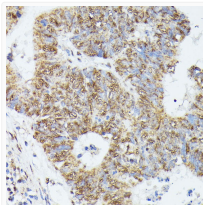
Gene ID	<a href="#">3835</a>
Gene Symbol	<a href="#">KIF22</a>
UniProt ID	<a href="#">KIF22_HUMAN</a>
Immunogen Region	456-665
Immunogen Sequence	QGAPLLSTPKRERMVLMKTV EEKDLIEIERLTKQKELEAK MLAQKAEKENHCPTMLRPL SHRTVTGAKPLKKAVVMPLQ LIQEQAASPNAEIHILKNKG RKRKLESLDALEPEEKAEDC WELQISPELLAHGRQKILD LNEGSARDLRS LQRIGPKKA QLIVGWRELHGPFQVDELE RVEGITGQMESFLKANILG LAAGQRCGAS
Specificity	Recombinant fusion protein containing a sequence corresponding to amino acids 456-665 of human KIF22 (NP_015556.1).

### ADDITIONAL INFORMATION

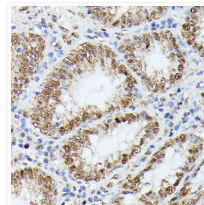
Note **STRICTLY FOR FURTHER SCIENTIFIC RESEARCH USE ONLY (RUO). MUST NOT TO BE USED IN DIAGNOSTIC OR THERAPEUTIC APPLICATIONS.**



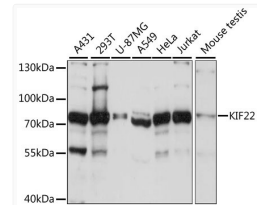
Immunohistochemistry analysis of KIF22 in paraffin-embedded human breast cancer using KIF22 Rabbit polyclonal antibody (STJ117480) at dilution of 1:100 (40x lens). Perform microwave antigen retrieval with 10 mM PBS buffer pH 7. 2 before commencing with immunohistochemistry staining protocol.



Immunohistochemistry analysis of KIF22 in paraffin-embedded human colon carcinoma using KIF22 Rabbit polyclonal antibody (STJ117480) at dilution of 1:100 (40x lens). Perform microwave antigen retrieval with 10 mM PBS buffer pH 7. 2 before commencing with immunohistochemistry staining protocol.



Immunohistochemistry analysis of KIF22 in paraffin-embedded human colon using KIF22 Rabbit polyclonal antibody (STJ117480) at dilution of 1:100 (40x lens). Perform microwave antigen retrieval with 10 mM PBS buffer pH 7. 2 before commencing with immunohistochemistry staining protocol.



Western blot analysis of various lysates using KIF22 Rabbit polyclonal antibody (STJ117480) at 1:1000 dilution. Secondary antibody: HRP Goat Anti-Rabbit IgG (H+L) (STJS000856) at 1:10000 dilution. Lysates/proteins: 25 µg per lane. Blocking buffer: 3% nonfat dry milk in TBST. Detection: ECL Basic Kit. Exposure time: 3s.