

Anti-FLII antibody (400-660) (STJ117468)

GENERAL INFORMATION

Product Type	Primary antibodies
Applications	WB/IHC-P/ELISA
Host / Source	Rabbit
Reactivity	Human/Mouse/Rat

PRODUCT PROPERTIES

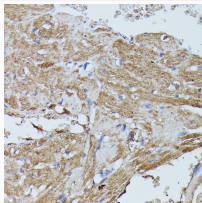
Clonality	Polyclonal
Concentration	Lot specific
Conjugation	Unconjugated
Purification	Affinity purification
Dilution Range	WB:1:200-1:2000 IHC-P:1:50-1:200 ELISA:Recommended starting concentration is 1 µg/mL. Please optimize the concentration based on your specific assay requirements.
Formulation	PBS with 0.01% Thimerosal, 50% Glycerol, pH 7.3.
Isotype	IgG
Molecular Weight	Protein Mw: 145kDa Observed Mw: 160kDa
Storage Instruction	Store at -20°C for up to 1 year from the date of receipt, and avoid repeat freeze-thaw cycles.

TARGET INFORMATION

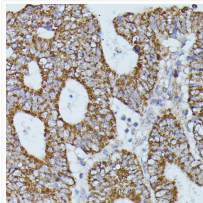
Gene ID	2314
Gene Symbol	FLII
UniProt ID	FLII_HUMAN
Immunogen Region	400-660
Immunogen Sequence	LRLAGASPATVAAAAAGSG PKDPMARKMLRRRKDSAQD DQAKQVLKGMSDVAQEKNKK QEEADARAPSGKVRWDQG LEKPRLDYSEFFTEVDGQLP GLTIWQIENFVPLVVEEAFH GKFYEADCYIVLKTFLDDSG SLNWEIYYWIGGEATLDKKA CSAIHAVNLRNRYLGAECRTV REEMGDESEEFLLQVFDNDIS YIEGGTASGFYTVEDTHYVT RMYRVYGGKNIKLEPVPLK
Specificity	Recombinant fusion protein containing a sequence corresponding to amino acids 400-660 of human FLII (NP_002009.1).

ADDITIONAL INFORMATION

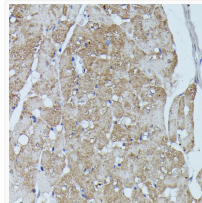
Note **STRICTLY FOR FURTHER SCIENTIFIC RESEARCH USE ONLY (RUO). MUST NOT TO BE USED IN DIAGNOSTIC OR THERAPEUTIC APPLICATIONS.**



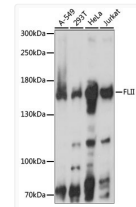
Immunohistochemistry analysis of FLII in paraffin-embedded mouse heart using FLII Rabbit polyclonal antibody (STJ117468) at dilution of 1:100 (40x lens). Perform microwave antigen retrieval with 10 mM PBS buffer pH 7.2 before commencing with immunohistochemistry staining protocol.



Immunohistochemistry analysis of FLII in paraffin-embedded human colon carcinoma using FLII Rabbit polyclonal antibody (STJ117468) at dilution of 1:100 (40x lens). Perform microwave antigen retrieval with 10 mM PBS buffer pH 7.2 before commencing with immunohistochemistry staining protocol.



Immunohistochemistry analysis of FLII in paraffin-embedded rat heart using FLII Rabbit polyclonal antibody (STJ117468) at dilution of 1:100 (40x lens). Perform microwave antigen retrieval with 10 mM PBS buffer pH 7.2 before commencing with immunohistochemistry staining protocol.



Western blot analysis of various lysates using FLII Rabbit polyclonal antibody (STJ117468) at 1:1000 dilution. Secondary antibody: HRP Goat Anti-Rabbit IgG (H+L) (STJS000856) at 1:10000 dilution. Lysates/proteins: 25 µg per lane. Blocking buffer: 3% nonfat dry milk in TBST. Detection: ECL Basic Kit. Exposure time: 5S.