

Anti-DBP antibody (1-325) (STJ117465)

GENERAL INFORMATION

Product Type	Primary antibodies
Applications	WB/ELISA
Host / Source	Rabbit
Reactivity	Human

PRODUCT PROPERTIES

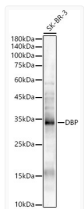
Clonality	Polyclonal
Concentration	Lot specific
Conjugation	Unconjugated
Purification	Affinity purification
Dilution Range	WB:1:200-1:2000 ELISA:Recommended starting concentration is 1 Mu g/mL. Please optimize the concentration based on your specific assay requirements.
Formulation	PBS with 0.05% Proclin300, 50% Glycerol, pH 7.3.
Isotype	IgG
Molecular Weight	Protein Mw: 34kDa Observed Mw: 34kDa
Storage Instruction	Store at -20°C for up to 1 year from the date of receipt, and avoid repeat freeze-thaw cycles.

TARGET INFORMATION

Gene ID	1628
Gene Symbol	DBP
UniProt ID	DBP_HUMAN
Immunogen Region	1-325
Immunogen Sequence	MARPVSDRTPAPLLLGGPAG TPPGGGALLGLRSLQGTSK PKEPASCLLKEKERKAALPA ATTPGPGLTAGPADAPAGA VVGGGSPRGRPGVPAPGLL APLLWERTLPFGDVEYVDLD AFLEHGLPPSPPPGGPSP EPSPARTPAPSPGPGSCGSA SPRSSPGHAPARAALGTASG HRAGLTSRDTSPVDPDVE VMTFEPDPADLALSSIPGH ETFDPRRHRFSEELKPQP
Specificity	Recombinant fusion protein containing a sequence corresponding to amino acids 1-325 of human DBP (NP_001343.2).

ADDITIONAL INFORMATION

Note **STRICTLY FOR FURTHER SCIENTIFIC RESEARCH USE ONLY (RUO). MUST NOT TO BE USED IN DIAGNOSTIC OR THERAPEUTIC APPLICATIONS.**



Western blot analysis of SK-BR-3, using DBP Rabbit polyclonal antibody (STJ117465) at 1:400 dilution. Secondary antibody: HRP Goat Anti-Rabbit IgG (H+L) (STJS000856) at 1:10000 dilution. Lysates/proteins: 25ug per lane. Blocking buffer: 3% nonfat dry milk in TBST. Detection: ECL Enhanced Kit. Exposure time: 30s.