

Anti-CENPE antibody (2542-2701) (STJ117458)

GENERAL INFORMATION

Product Type	Primary antibodies
Applications	WB/ELISA
Host / Source	Rabbit
Reactivity	Human/Mouse/Rat

PRODUCT PROPERTIES

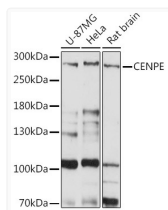
Clonality	Polyclonal
Concentration	Lot specific
Conjugation	Unconjugated
Purification	Affinity purification
Dilution Range	WB:1:200-1:2000 ELISA:Recommended starting concentration is 1 µg/mL. Please optimize the concentration based on your specific assay requirements.
Formulation	PBS with 0.01% Thimerosal, 50% Glycerol, pH 7.3.
Isotype	IgG
Molecular Weight	Protein Mw: 316kDa Observed Mw: 270kDa
Storage Instruction	Store at -20°C for up to 1 year from the date of receipt, and avoid repeat freeze-thaw cycles.

TARGET INFORMATION

Gene ID	1062
Gene Symbol	CENPE
UniProt ID	CENPE_HUMAN
Immunogen Region	2542-2701
Immunogen Sequence	ALILKSEHIRLEKEISKLKQ QNEQLIKQKNELLSNNQHLS NEVKTWKERTLKREAHKQVT CENSPKSPKVTGTASKKKQI TPSQCKERNLQDPVPKESPK SCFFDSRSKSLPSPHPVRYF DNSSLGLCPEVQNAGAESVD SQPGPWHASSGKDVPECKTQ
Specificity	Recombinant fusion protein containing a sequence corresponding to amino acids 2542-2701 of human CENPE (NP_001804.2).

ADDITIONAL INFORMATION

Note STRICTLY FOR FURTHER SCIENTIFIC RESEARCH USE ONLY (RUO). MUST NOT TO BE USED IN DIAGNOSTIC OR THERAPEUTIC APPLICATIONS.



Western blot analysis of various lysates using CENPE Rabbit polyclonal antibody (STJ117458) at 1:1000 dilution. Secondary antibody: HRP Goat Anti-Rabbit IgG (H+L) (STJS000856) at 1:10000 dilution. Lysates/proteins: 25 µg per lane. Blocking buffer: 3% nonfat dry milk in TBST. Detection: ECL Basic Kit. Exposure time: 90s.