

Anti-ATP6V0A1 antibody (60-300) (STJ117453)

GENERAL INFORMATION

Product Type	Primary antibodies
Applications	WB/IF/ICC/ELISA
Host / Source	Rabbit
Reactivity	Human/Mouse/Rat

PRODUCT PROPERTIES

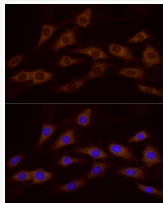
Clonality	Polyclonal
Concentration	Lot specific
Conjugation	Unconjugated
Purification	Affinity purification
Dilution Range	WB:1:500-1:2000 IF/CC:1:50-1:200 ELISA:Recommended starting concentration is 1 μ g/mL. Please optimize the concentration based on your specific assay requirements.
Formulation	PBS with 0.01% Thimerosal, 50% Glycerol, pH 7.3.
Isotype	IgG
Molecular Weight	Protein Mw: 96kDa Observed Mw: Refer to figures
Storage Instruction	Store at -20°C for up to 1 year from the date of receipt, and avoid repeat freeze-thaw cycles.

TARGET INFORMATION

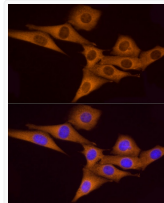
Gene ID	535
Gene Symbol	ATP6V0A1
UniProt ID	VPP1_HUMAN
Immunogen Region	60-300
Immunogen Sequence	EMDRKLRVFEKEIRKANIPIMDTGENPEVPFPRDMIDLEA NFEKIENELKEINTNQEALK RNFLELTELKFI LRKTQQFF DEMADPDLLEESSLLEPSE MGRGTPLRLGFVAGVINRER IPTFERMLWRVCRGNVFLRQ AEIENPLEDPVTGDYVHKSV FIIFFQGDQLKNRVKKICEG FRASLYPCPETPQERKEMAS GVNTRIDDLQMVNLNQTEDHR QRVLQAAAANKIRVWFIKVR
Specificity	Recombinant fusion protein containing a sequence corresponding to amino acids 60-300 of human ATP6V0A1 (NP_001123493.1).

ADDITIONAL INFORMATION

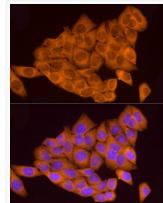
Note **STRICTLY FOR FURTHER SCIENTIFIC RESEARCH USE ONLY (RUO). MUST NOT TO BE USED IN DIAGNOSTIC OR THERAPEUTIC APPLICATIONS.**



Immunofluorescence analysis of C6 cells using ATP6V0A1 Rabbit polyclonal antibody (STJ117453) at dilution of 1:100. Secondary antibody: Cy3 Goat Anti-Rabbit IgG (H+L) at 1:500 dilution. Blue: DAPI for nuclear staining.



Immunofluorescence analysis of NIH/3T3 cells using ATP6V0A1 Rabbit polyclonal antibody (STJ117453) at dilution of 1:100. Secondary antibody: Cy3 Goat Anti-Rabbit IgG (H+L) at 1:500 dilution. Blue: DAPI for nuclear staining.



Immunofluorescence analysis of HeLa cells using ATP6V0A1 Rabbit polyclonal antibody (STJ117453) at dilution of 1:100. Secondary antibody: Cy3 Goat Anti-Rabbit IgG (H+L) at 1:500 dilution. Blue: DAPI for nuclear staining.