

Anti-ATP5C1 antibody (26-298) (STJ117452)

GENERAL INFORMATION

Product Type	Primary antibodies
Applications	WB/IHC-P/IF/ICC/ELISA
Host / Source	Rabbit
Reactivity	Human/Mouse/Rat

PRODUCT PROPERTIES

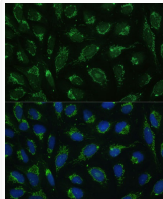
Clonality	Polyclonal
Concentration	Lot specific
Conjugation	Unconjugated
Purification	Affinity purification
Dilution Range	WB:1:200-1:2000 IHC-P:1:50-1:200 IF/CC:1:50-1:200 ELISA:Recommended starting concentration is 1 µg/mL. Please optimize the concentration based on your specific assay requirements.
Formulation	PBS with 0.05% Proclin300, 50% Glycerol, pH 7.3.
Isotype	IgG
Molecular Weight	Protein Mw: 33kDa Observed Mw: 35kDa
Storage Instruction	Store at -20°C for up to 1 year from the date of receipt, and avoid repeat freeze-thaw cycles.

TARGET INFORMATION

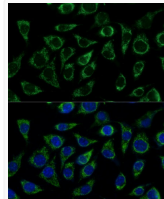
Gene ID	509
Gene Symbol	ATP5F1C
UniProt ID	ATPG_HUMAN
Immunogen Region	26-298
Immunogen Sequence	ATLKDITRRLKSIKNIQKIT KSMKMVAAAKYARAERELKP ARIYGLGSLALYEKADIKGP EDKPKHLLIGVSSDRGLCGA IHSSIAKQMKSEVATLTAAG KEVMLVGIGDKIRGILYRTH SDQFLVAFKEVGRKPPTFGD ASVIALELLNSGYEFDEGSI IFNKFRSVISYKTEEKPIFS LNTVASADSMSIYDDIDADV LQNYQEYNLANIYYSLKES TTSEQSARMTAMDNASKNA
Specificity	Recombinant fusion protein containing a sequence corresponding to amino acids 26-298 of human ATP5C1 (NP_001001973.1).

ADDITIONAL INFORMATION

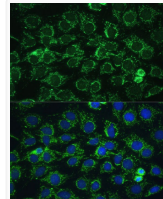
Note **STRICTLY FOR FURTHER SCIENTIFIC RESEARCH USE ONLY (RUO). MUST NOT TO BE USED IN DIAGNOSTIC OR THERAPEUTIC APPLICATIONS.**



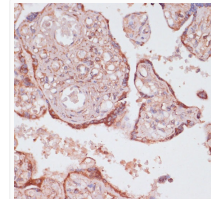
Immunofluorescence analysis of U-2 OS cells using ATP5C1 Polyclonal Antibody (STJ117452) at dilution of 1:100 (40x lens). Blue: DAPI for nuclear staining.



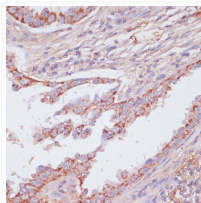
Immunofluorescence analysis of L929 cells using ATP5C1 Polyclonal Antibody (STJ117452) at dilution of 1:100 (40x lens). Blue: DAPI for nuclear staining.



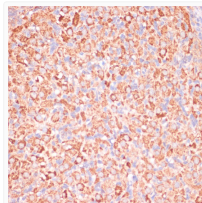
Immunofluorescence analysis of C6 cells using ATP5C1 Polyclonal Antibody (STJ117452) at dilution of 1:100 (40x lens). Blue: DAPI for nuclear staining.



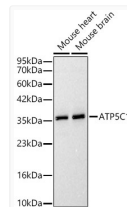
Immunohistochemistry analysis of paraffin-embedded human placenta using ATP5C1 antibody (STJ117452) at dilution of 1:100 (40x lens). Perform microwave antigen retrieval with 10 mM PBS buffer pH 7.2 before commencing with immunohistochemistry staining protocol.



Immunohistochemistry analysis of paraffin-embedded human lung cancer using ATP5C1 antibody (STJ117452) at dilution of 1:100 (40x lens). Perform microwave antigen retrieval with 10 mM PBS buffer pH 7.2 before commencing with immunohistochemistry staining protocol.



Immunohistochemistry analysis of paraffin-embedded rat ovary using ATP5C1 antibody (STJ117452) at dilution of 1:100 (40x lens). Perform microwave antigen retrieval with 10 mM PBS buffer pH 7.2 before commencing with immunohistochemistry staining protocol.



Western blot analysis of various lysates, using ATP5C1 Rabbit polyclonal antibody (STJ117452) at 1:1000 dilution. Secondary antibody: HRP Goat Anti-Rabbit IgG (H+L) (STJS000856) at 1:10000 dilution. Lysates/proteins: 25µg per lane. Blocking buffer: 3% nonfat dry milk in TBST. Detection: ECL Basic Kit. Exposure time: 90s.