

Anti-ACLY antibody (752-1101) (STJ117446)

GENERAL INFORMATION

Product Type	Primary antibodies
Applications	WB/IHC-P/IF/ICC/ELISA
Host / Source	Rabbit
Reactivity	Human/Mouse/Rat

PRODUCT PROPERTIES

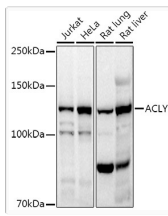
Clonality	Polyclonal
Concentration	Lot specific
Conjugation	Unconjugated
Purification	Affinity purification
Dilution Range	WB:1:500-1:1000 IHC-P:1:50-1:200 IF/CC:1:50-1:200 ELISA:Recommended starting concentration is 1 µg/mL. Please optimize the concentration based on your specific assay requirements.
Formulation	PBS with 0.05% Proclin300, 50% Glycerol, pH 7.3.
Isotype	IgG
Molecular Weight	Protein Mw: 121kDa Observed Mw: 125kDa
Storage Instruction	Store at -20°C for up to 1 year from the date of receipt, and avoid repeat freeze-thaw cycles.

TARGET INFORMATION

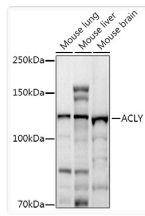
Gene ID	47
Gene Symbol	ACLY
UniProt ID	ACLY_HUMAN
Immunogen Region	752-1101
Immunogen Sequence	FSSEVQFGHAGACANQASET AVAKNQALKEAGVFVPRSFDELGEIIQSVYEDLVANGVIVPAQEVPPPTVPMDYSWAREL GLIRKPASFMTSICDERGQELIYAGMPITEVFKKEEMGIGGLVGLLWFQKRLPKYSCQFIE MCLMVTADHGPAVSGAHNTI ICARAGKDLVSSLTSGLLTI GDRFGGALDAAAKMFSKAFD SGIIPMEFVNKMKKEGKLIM GIGHRVKSINNPDMRVQIL
Specificity	Recombinant fusion protein containing a sequence corresponding to amino acids 752-1101 of human ACLY (NP_001087.2).

ADDITIONAL INFORMATION

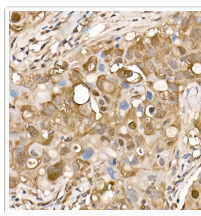
Note	STRICTLY FOR FURTHER SCIENTIFIC RESEARCH USE ONLY (RUO). MUST NOT TO BE USED IN DIAGNOSTIC OR THERAPEUTIC APPLICATIONS.
------	---



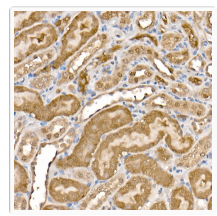
Western blot analysis of extracts of various cell lines, using ACLY antibody (STJ117446) at 1:1000 dilution. Secondary antibody: HRP Goat Anti-rabbit IgG (H+L) (STJS000856) at 1:10000 dilution. Lysates/proteins: 25 μ g per lane. Blocking buffer: 3% non-fat dry milk in TBST. Detection: ECL Basic Kit. Exposure time: 10s.



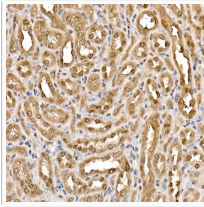
Western blot analysis of extracts of various cell lines, using ACLY antibody (STJ117446) at 1:1000 dilution. Secondary antibody: HRP Goat Anti-rabbit IgG (H+L) (STJS000856) at 1:10000 dilution. Lysates/proteins: 25 μ g per lane. Blocking buffer: 3% non-fat dry milk in TBST. Detection: ECL Basic Kit. Exposure time: 30s.



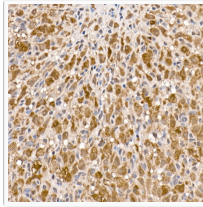
Immunohistochemistry analysis of paraffin-embedded human breast cancer using ACLY rabbit polyclonal antibody (STJ117446) at dilution of 1:100 (40x lens). Perform high pressure antigen retrieval with 10 mM citrate buffer pH 6.0 before commencing with immunohistochemistry staining protocol.



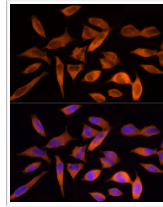
Immunohistochemistry analysis of paraffin-embedded mouse kidney using ACLY rabbit polyclonal antibody (STJ117446) at dilution of 1:100 (40x lens). Perform high pressure antigen retrieval with 10 mM citrate buffer pH 6.0 before commencing with immunohistochemistry staining protocol.



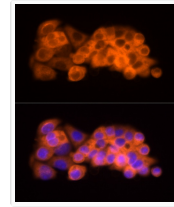
Immunohistochemistry analysis of paraffin-embedded rat kidney using ACLY rabbit polyclonal antibody (STJ117446) at dilution of 1:100 (40x lens). Perform high pressure antigen retrieval with 10 mM citrate buffer pH 6.0 before commencing with immunohistochemistry staining protocol.



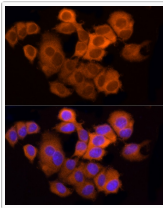
Immunohistochemistry analysis of paraffin-embedded rat ovary using ACLY rabbit polyclonal antibody (STJ117446) at dilution of 1:100 (40x lens). Perform high pressure antigen retrieval with 10 mM citrate buffer pH 6.0 before commencing with immunohistochemistry staining protocol.



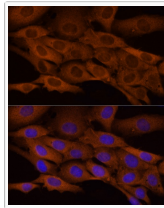
Immunofluorescence analysis of HeLa cells using ACLY rabbit polyclonal antibody (STJ117446) at dilution of 1:200 (40x lens). Blue: DAPI for nuclear staining.



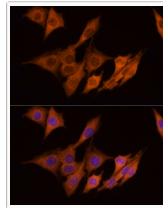
Immunofluorescence analysis of HepG2 cells using ACLY rabbit polyclonal antibody (STJ117446) at dilution of 1:200 (40x lens). Blue: DAPI for nuclear staining.



Immunofluorescence analysis of MCF7 cells using ACLY rabbit polyclonal antibody (STJ117446) at dilution of 1:200 (40x lens). Blue: DAPI for nuclear staining.



Immunofluorescence analysis of NIH/3T3 cells using ACLY rabbit polyclonal antibody (STJ117446) at dilution of 1:200 (40x lens). Blue: DAPI for nuclear staining.



Immunofluorescence analysis of PC-12 cells using ACLY rabbit polyclonal antibody (STJ117446) at dilution of 1:200 (40x lens). Blue: DAPI for nuclear staining.