

Anti-SLC6A3 antibody (1-100) (STJ117430)

GENERAL INFORMATION

Product Type	Primary antibodies
Applications	WB/IHC-P/IF/ICC/ELISA
Host / Source	Rabbit
Reactivity	Human/Mouse/Rat

PRODUCT PROPERTIES

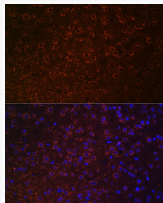
Clonality	Polyclonal
Concentration	Lot specific
Conjugation	Unconjugated
Purification	Affinity purification
Dilution Range	WB:1:500-1:1000 IHC-P:1:50-1:100 IF/CC:1:50-1:200 ELISA:Recommended starting concentration is 1 Mu g/mL. Please optimize the concentration based on your specific assay requirements.
Formulation	PBS with 0.05% Proclin300, 50% Glycerol, pH 7.3.
Isotype	IgG
Molecular Weight	Protein Mw: 68kDa Observed Mw: 72kDa
Storage Instruction	Store at -20°C for up to 1 year from the date of receipt, and avoid repeat freeze-thaw cycles.

TARGET INFORMATION

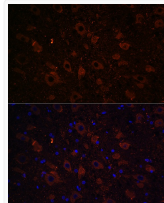
Gene ID	6531
Gene Symbol	SLC6A3
UniProt ID	SC6A3_HUMAN
Immunogen Region	1-100
Immunogen Sequence	MSKSKCSVGLMSSVVAPAKE PNAVGPKEVELILVKEQNGV QLTSSTLTNPRQSPVEAQDR ETWGGKIDFLLSVIGFAVDL ANVWRFPYLCYKNGGGGAFV
Specificity	A synthetic peptide corresponding to a sequence within amino acids 1-100 of human Dopamine Transporter/SLC6A3 (NP_001035.1).

ADDITIONAL INFORMATION

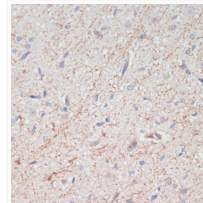
Note **STRICTLY FOR FURTHER SCIENTIFIC RESEARCH USE ONLY (RUO). MUST NOT TO BE USED IN DIAGNOSTIC OR THERAPEUTIC APPLICATIONS.**



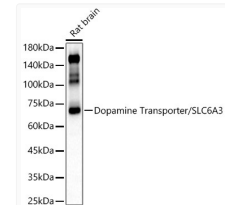
Immunofluorescence analysis of mouse brain using Dopamine Transporter/SLC6A3 Rabbit polyclonal antibody (STJ117430) at dilution of 1:100 (40x lens). Blue: DAPI for nuclear staining.



Immunofluorescence analysis of rat brain using Dopamine Transporter/SLC6A3 Rabbit polyclonal antibody (STJ117430) at dilution of 1:100 (40x lens). Blue: DAPI for nuclear staining.



Immunohistochemistry analysis of paraffin-embedded rat brain using Dopamine Transporter/SLC6A3 antibody (STJ117430) at dilution of 1:200 (40x lens). Perform microwave antigen retrieval with 10 mM PBS buffer pH 7.2 before commencing with immunohistochemistry staining protocol.



Western blot analysis of Rat brain, using Dopamine Transporter/SLC6A3 antibody (STJ117430) at 1:700 dilution. Secondary antibody: HRP Goat Anti-Rabbit IgG (H+L) (STJS000856) at 1:10000 dilution. Lysates/proteins: 25 Mu g per lane. Blocking buffer: 3% nonfat dry milk in TBST. Detection: ECL Basic Kit. Exposure time: 30s.