

Anti-ANGPTL5 antibody (1-388) (STJ117415)

GENERAL INFORMATION

Product Type	Primary antibodies
Applications	WB/ELISA
Host / Source	Rabbit
Reactivity	Human

PRODUCT PROPERTIES

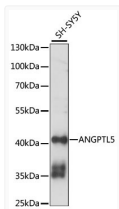
Clonality	Polyclonal
Concentration	Lot specific
Conjugation	Unconjugated
Purification	Affinity purification
Dilution Range	WB:1:500-1:2000 ELISA:Recommended starting concentration is 1 Mu g/mL. Please optimize the concentration based on your specific assay requirements.
Formulation	PBS with 0.01% Thimerosal, 50% Glycerol, pH 7.3.
Isotype	IgG
Molecular Weight	Protein Mw: 44kDa Observed Mw: 44kDa
Storage Instruction	Store at -20°C for up to 1 year from the date of receipt, and avoid repeat freeze-thaw cycles.

TARGET INFORMATION

Gene ID	253935
Gene Symbol	ANGPTL5
UniProt ID	ANGL5_HUMAN
Immunogen Region	1-388
Immunogen Sequence	MMSPSQASLLFLNVCIFICG EAVQGNCVHHSTDSSVVNIV EDGSNAKDESKSNDTVCKED CEESCDVKTKITREEKHFMCRNLQNSIVSYTRSTKLLRN MMDEQQASLDYLSNQVNELM NRVLLLTTEVFRKQLDPFPH RVPQSHGLDCTDIKDTIGSV KTPSGLYIIHPEGSSYPFE VMCDMDYRGGGRTVIQKRID GIIDFQRLWCDYLDGFGDLL GEFWLGLKKIFYVNVQKNT
Specificity	Recombinant fusion protein containing a sequence corresponding to amino acids 1-388 of human ANGPTL5 (NP_835228.2).

ADDITIONAL INFORMATION

Note **STRICTLY FOR FURTHER SCIENTIFIC RESEARCH USE ONLY (RUO). MUST NOT TO BE USED IN DIAGNOSTIC OR THERAPEUTIC APPLICATIONS.**



Western blot analysis of lysates from SH-SY5Y cells, using ANGPTL5 Rabbit polyclonal antibody (STJ117415) at 1:1000 dilution. Secondary antibody: HRP Goat Anti-Rabbit IgG (H+L) (STJS000856) at 1:10000 dilution. Lysates/proteins: 25 Mu g per lane. Blocking buffer: 3% nonfat dry milk in TBST. Detection: ECL Basic Kit. Exposure time: 60S.