

## Anti-PDGFC antibody (166-345) (STJ117368)

### GENERAL INFORMATION

|               |                    |
|---------------|--------------------|
| Product Type  | Primary antibodies |
| Applications  | WB/ELISA           |
| Host / Source | Rabbit             |
| Reactivity    | Human/Mouse/Rat    |

### PRODUCT PROPERTIES

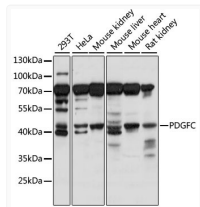
|                     |  |
|---------------------|--|
| Clonality           | Polyclonal   |
| Concentration       | Lot specific   |
| Conjugation         | Unconjugated   |
| Purification        | Affinity purification  |
| Dilution Range      | WB:1:500-1:2000<br>ELISA:Recommended starting concentration is 1 µg/mL. Please optimize the concentration based on your specific assay requirements. |
| Formulation         | PBS with 0.01% Thimerosal, 50% Glycerol, pH 7.3.   |
| Isotype             | IgG  |
| Molecular Weight    | Protein Mw: 39kDa<br>Observed Mw: 40kDa  |
| Storage Instruction | Store at -20°C for up to 1 year from the date of receipt, and avoid repeat freeze-thaw cycles.   |

### TARGET INFORMATION

|                    |  |
|--------------------|--|
| Gene ID            | <a href="#">56034</a>  |
| Gene Symbol        | <a href="#">PDGFC</a>  |
| UniProt ID         | <a href="#">PDGFC_HUMAN</a>  |
| Immunogen Region   | 166-345  |
| Immunogen Sequence | QFTEAVSPSVLPSPALPLDL LNNAITAFSTLEDLIRYLEP ERWQLDLEDLYRPTWQLLGK<br>AFVFGGRKSRVVDLNLLEEV RLYSCTPRNFSVSIREELKR TDTIFWPGCLLVKRCGGNCA<br>CCLHNCNECQCVPKVTTKY HEVLQLRPKTGVRGLHKSLLT DVALEHHEECDVCVRGSTGG |
| Specificity        | Recombinant fusion protein containing a sequence corresponding to amino acids 166-345 of human PDGFC (NP_057289.1).  |

### ADDITIONAL INFORMATION

Note **STRICTLY FOR FURTHER SCIENTIFIC RESEARCH USE ONLY (RUO). MUST NOT TO BE USED IN DIAGNOSTIC OR THERAPEUTIC APPLICATIONS.**



Western blot analysis of various lysates using PDGFC Rabbit polyclonal antibody (STJ117368) at 1:1000 dilution. Secondary antibody: HRP Goat Anti-Rabbit IgG (H+L) (STJS000856) at 1:10000 dilution. Lysates/proteins: 25 µg per lane. Blocking buffer: 3% nonfat dry milk in TBST. Detection: ECL Basic Kit. Exposure time: 5s.