

Anti-PSENN antibody (1-101) (STJ117366)

GENERAL INFORMATION

Product Type	Primary antibodies
Applications	WB/ELISA
Host / Source	Rabbit
Reactivity	Human/Mouse/Rat

PRODUCT PROPERTIES

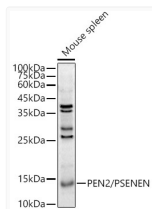
Clonality	Polyclonal
Concentration	Lot specific
Conjugation	Unconjugated
Purification	Affinity purification
Dilution Range	WB:1:500-1:1000 ELISA:Recommended starting concentration is 1 Mu g/mL. Please optimize the concentration based on your specific assay requirements.
Formulation	PBS with 0.09% Sodium Azide, 50% Glycerol, pH7.3.
Isotype	IgG
Molecular Weight	Protein Mw: 12kDa Observed Mw: 13kDa
Storage Instruction	Store at-20°C for up to 1 year from the date of receipt, and avoid repeat freeze-thaw cycles.

TARGET INFORMATION

Gene ID	55851
Gene Symbol	PSENN
UniProt ID	PEN2_HUMAN
Immunogen Region	1-101
Immunogen Sequence	MNLERVSNEEKLNLCKRYYL GGFAFLPFLWLVNIFWFFRE AFLVPAYTEQSQIKGYVWRS AVGFLFWVIVLTSWITIFQI YRPRWGALGDYLSFTIPLGT P
Specificity	A synthetic peptide corresponding to a sequence within amino acids 1-101 of human PEN2/PSENN (NP_758844.1).

ADDITIONAL INFORMATION

Note STRICTLY FOR FURTHER SCIENTIFIC RESEARCH USE ONLY (RUO). MUST NOT TO BE USED IN DIAGNOSTIC OR THERAPEUTIC APPLICATIONS.



Western blot analysis of extracts of Mouse spleen, using PEN2/PSENN antibody (STJ117366) at 1:1000 dilution. Secondary antibody: HRP Goat Anti-Rabbit IgG (H+L) (STJS000856) at 1:10000 dilution. Lysates/proteins: 25 Mu g per lane. Blocking buffer: 3% nonfat dry milk in TBST. Detection: ECL Enhanced Kit. Exposure time: 180s.