

Anti-STRBP antibody (40-190) (STJ117363)

GENERAL INFORMATION

| | |
|---------------|--------------------|
| Product Type | Primary antibodies |
| Applications | WB/ELISA |
| Host / Source | Rabbit |
| Reactivity | Human |

PRODUCT PROPERTIES

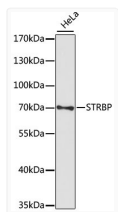
| | |
|---------------------|--|
| Clonality | Polyclonal |
| Concentration | Lot specific |
| Conjugation | Unconjugated |
| Purification | Affinity purification |
| Dilution Range | WB:1:500-1:2000 ELISA:Recommended starting concentration is 1 µg/mL. Please optimize the concentration based on your specific assay requirements. |
| Formulation | PBS with 0.01% Thimerosal, 50% Glycerol, pH 7.3. |
| Isotype | IgG |
| Molecular Weight | Protein Mw: 74kDa Observed Mw: 74kDa |
| Storage Instruction | Store at -20°C for up to 1 year from the date of receipt, and avoid repeat freeze-thaw cycles. |

TARGET INFORMATION

| | |
|--------------------|--|
| Gene ID | 55342 |
| Gene Symbol | STRBP |
| UniProt ID | STRBP_HUMAN |
| Immunogen Region | 40-190 |
| Immunogen Sequence | CALKHVSVDWLDETNGKGTKE GETEVKKDEAGENYSKDQGG RTLCGVMRIGLVAKGLLIKD DMDLELVLMCKDKPTETLLN TVKDNLP IQIKLTEEKYQV EQCVNEASIIIRNTKEPTLT LKVILTSPLIRDELEKKGDE NVSMKDPDDL |
| Specificity | Recombinant fusion protein containing a sequence corresponding to amino acids 40-190 of human STRBP (NP_060857.2). |

ADDITIONAL INFORMATION

Note STRICTLY FOR FURTHER SCIENTIFIC RESEARCH USE ONLY (RUO). MUST NOT TO BE USED IN DIAGNOSTIC OR THERAPEUTIC APPLICATIONS.



Western blot analysis of lysates from HeLa cells, using STRBP Rabbit polyclonal antibody (STJ117363) at 1:1000 dilution. Secondary antibody: HRP Goat Anti-Rabbit IgG (H+L) (STJS000856) at 1:10000 dilution. Lysates/proteins: 25 µg per lane. Blocking buffer: 3% nonfat dry milk in TBST. Detection: ECL Basic Kit. Exposure time: 90s.