

Anti-RNASEH2A antibody (1-299) (STJ117326)

GENERAL INFORMATION

Product Type	Primary antibodies
Applications	WB/IF/ICC/ELISA
Host / Source	Rabbit
Reactivity	Human/Rat

PRODUCT PROPERTIES

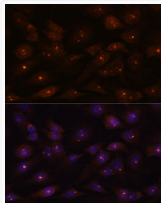
Clonality	Polyclonal
Concentration	Lot specific
Conjugation	Unconjugated
Purification	Affinity purification
Dilution Range	WB:1:500-1:2000 IF/CC:1:50-1:200 ELISA:Recommended starting concentration is 1 Mu g/mL. Please optimize the concentration based on your specific assay requirements.
Formulation	PBS with 0.01% Thimerosal, 50% Glycerol, pH 7.3.
Isotype	IgG
Molecular Weight	Protein Mw: 33kDa Observed Mw: 33kDa
Storage Instruction	Store at -20°C for up to 1 year from the date of receipt, and avoid repeat freeze-thaw cycles.

TARGET INFORMATION

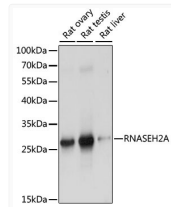
Gene ID	10535
Gene Symbol	RNASEH2A
UniProt ID	RNH2A_HUMAN
Immunogen Region	1-299
Immunogen Sequence	MDLSELERDNTGRCRLSSPV PAVCRKEPCVLGVDEAGRGP VLGPMVYAICYCPLPRLADL EALKVADSKTLLESEERERLF AKMEDTDFVGWALDVLSPNL ISTSMLGRVKYNLNSLSHDT ATGLIQYALDQGVNVTQVFV DTVGMPETYQARLQQSFPGI EVTVKAKADALYPVSAASI CAKVARDAQVKKWQFVEKLQ DLDTDYGSGYPNDPKTKAWL KEHVPEPVFGFPQVFRFSWR
Specificity	Recombinant fusion protein containing a sequence corresponding to amino acids 1-299 of human RNASEH2A (NP_006388.2).

ADDITIONAL INFORMATION

Note **STRICTLY FOR FURTHER SCIENTIFIC RESEARCH USE ONLY (RUO). MUST NOT TO BE USED IN DIAGNOSTIC OR THERAPEUTIC APPLICATIONS.**



Immunofluorescence analysis of C6 cells using RNASEH2A Rabbit polyclonal antibody (STJ117326) at dilution of 1:100. Secondary antibody: Cy3 Goat Anti-Rabbit IgG (H+L) at 1:500 dilution. Blue: DAPI for nuclear staining.



Western blot analysis of various lysates using RNASEH2A Rabbit polyclonal antibody (STJ117326) at 1:1000 dilution. Secondary antibody: HRP Goat Anti-Rabbit IgG (H+L) (STJS000856) at 1:10000 dilution. Lysates/proteins: 25 Mu g per lane. Blocking buffer: 3% nonfat dry milk in TBST. Detection: ECL Basic Kit. Exposure time: 1s.